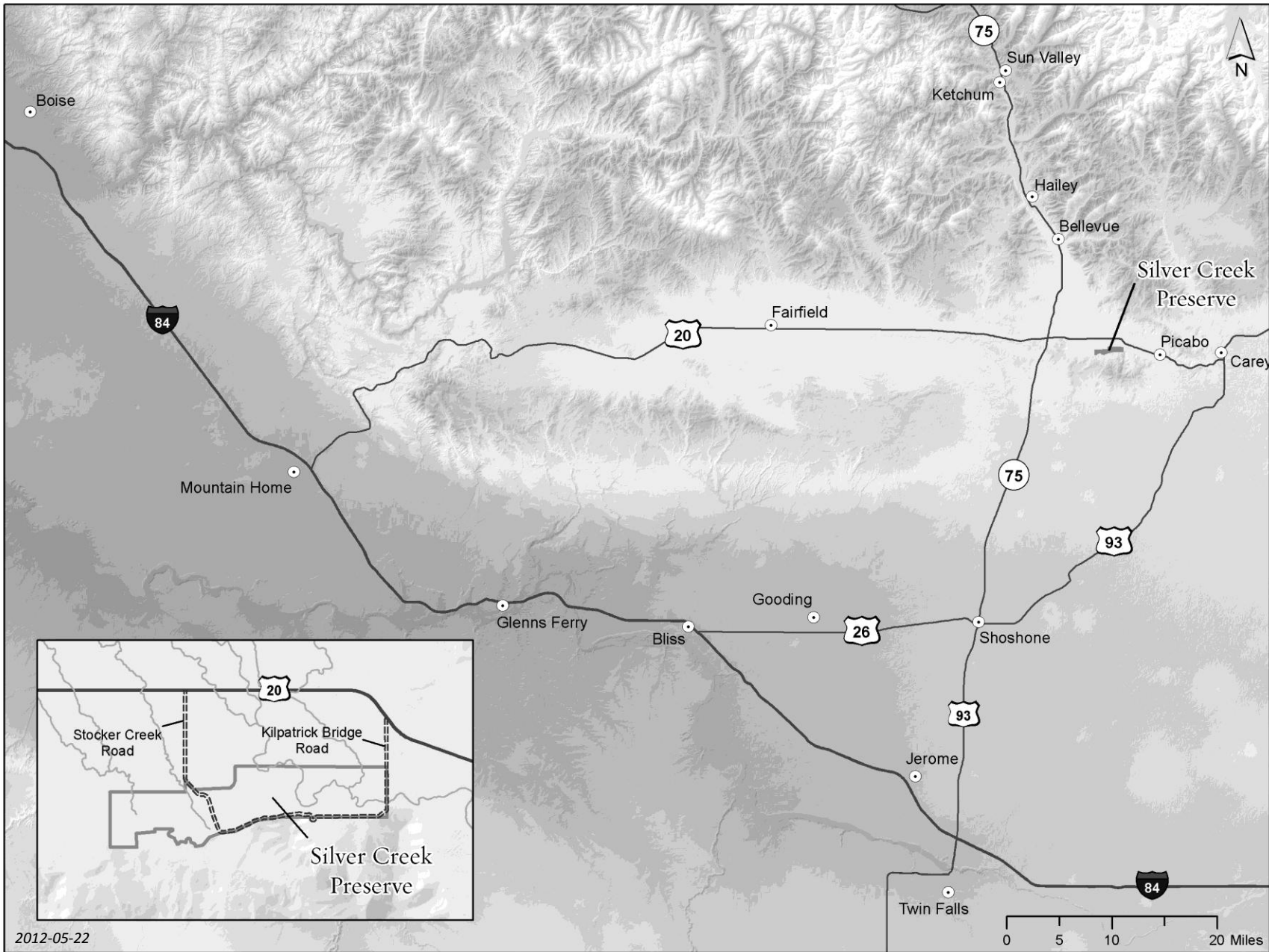
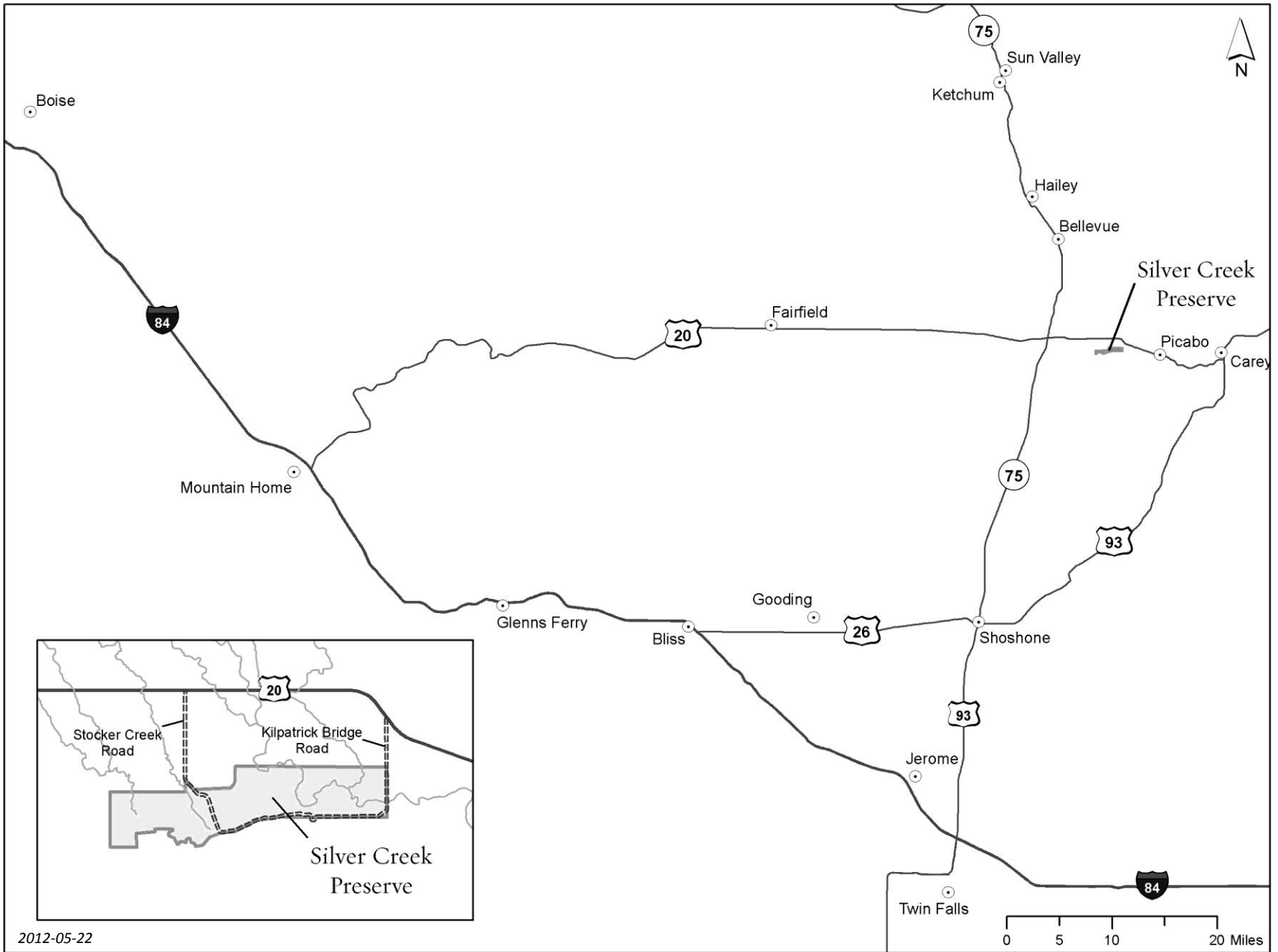


Driving Directions to the Silver Creek Preserve

- The Visitors Center is 33.1 miles *from Ketchum*. Drive south on Highway 75 through Hailey and Bellevue for 26 miles. Turn left at the flashing light (Timmerman Junction) onto Highway 20. Drive 7.1 miles to Kilpatrick Bridge Road (there is a brown sign on the Highway saying "Silver Creek Preserve"). Turn right, go over the bridge and follow the road to the Visitors Center on the hill.
- The Visitors Center is 138 miles *from Boise*. Drive south on Interstate 84 toward Mountain Home. Take Exit 95 for US-20 N. Turn left onto Highway 20. From flashing light at intersection of Highway 20 and Highway 75 continue for 7.1 miles to Kilpatrick Bridge Road (there is a brown sign on the highway saying "Silver Creek Preserve"). Turn right, go over the bridge and follow the road to the Visitors Center on the hill.
- The Visitors Center is 63.6 miles *from Twin Falls*. Drive north on Highway 93 and continue north on Highway 75 leaving Shoshone. Turn right at the flashing light onto Highway 20. Drive 7.1 miles to Kilpatrick Bridge Road (there is a brown sign on the highway saying "Silver Creek Preserve"). Turn right, go over the bridge and follow the road to the Visitors Center on the hill.



2012-05-22



2012-05-22