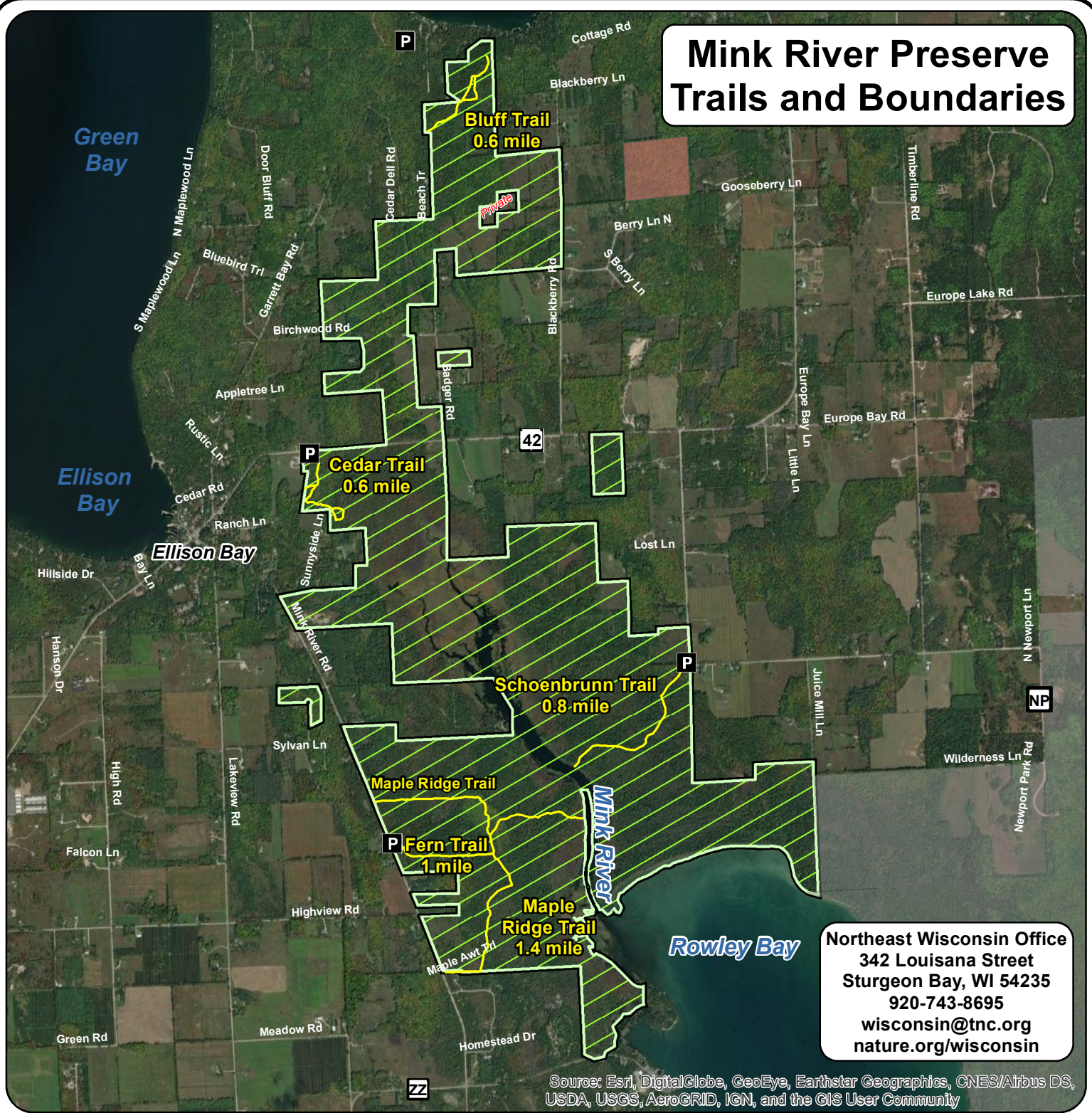


# Mink River Preserve Trails and Boundaries



**Northeast Wisconsin Office**  
 342 Louisiana Street  
 Sturgeon Bay, WI 54235  
 920-743-8695  
[wisconsin@tnc.org](mailto:wisconsin@tnc.org)  
[nature.org/wisconsin](http://nature.org/wisconsin)

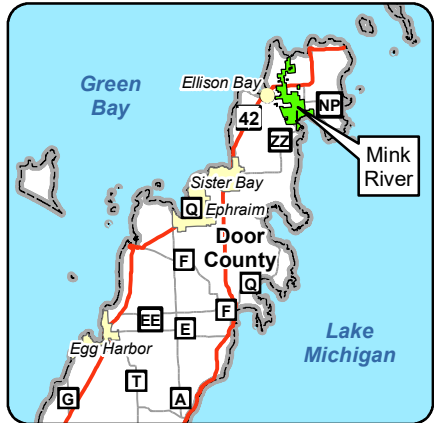
Source: Esri, DigitalGlobe, GeoEye, Earthstar Geographics, CNES/Airbus DS, USDA, USGS, AeroGRID, IGN, and the GIS User Community

Nature Conservancy Preserve
 Rustic Trail
 Wisconsin DNR
 Door County Land Trust
 Parking

0 0.25 0.5 0.75 1 Miles

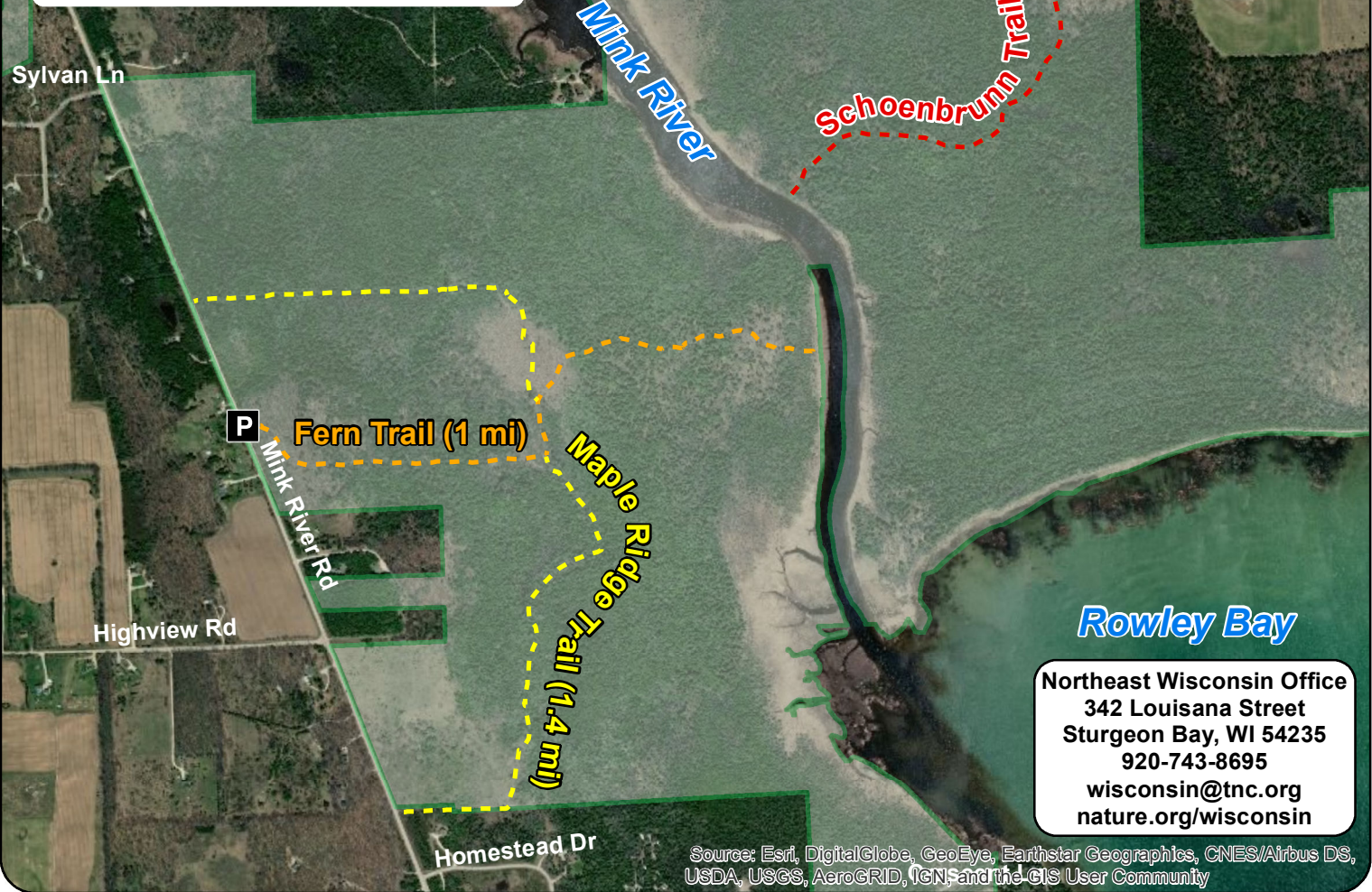
**Directions:** West trail: From Ellison Bay, travel southeast on Mink River Road for approximately 2 miles. A parking area is next to the trailhead on the east side of Mink River Road. Northeast trail: From Ellison Bay, travel east on State Highway 42 for 2 miles. Turn right on County Road NP and travel one mile south. The trailhead is on the west side of County NP where it makes a 90 degree turn east. Park in parking area adjacent to gated trailhead.

6/17/2022  
 web\_map\_MinkRiver.mxd





# Mink River Preserve Trails and Boundaries



**Northeast Wisconsin Office**  
 342 Louisiana Street  
 Sturgeon Bay, WI 54235  
 920-743-8695  
[wisconsin@tnc.org](mailto:wisconsin@tnc.org)  
[nature.org/wisconsin](http://nature.org/wisconsin)

Nature Conservancy Preserve

Maple Ridge Trail

Fern Trail

Schoenbrunn Trail

Bluff Trail

Parking

The Nature Conservancy  
Protecting nature. Preserving life.

Directions: West trail: From Ellison Bay, travel southeast on Mink River Road for approximately 2 miles. A parking area is next to the trailhead on the east side of Mink River Road. Northeast trail: From Ellison Bay, travel east on State Highway 42 for 2 miles. Turn right on County Road NP and travel one mile south. The trailhead is on the west side of County NP where it makes a 90 degree turn east. Park in parking area adjacent to gated trailhead.

