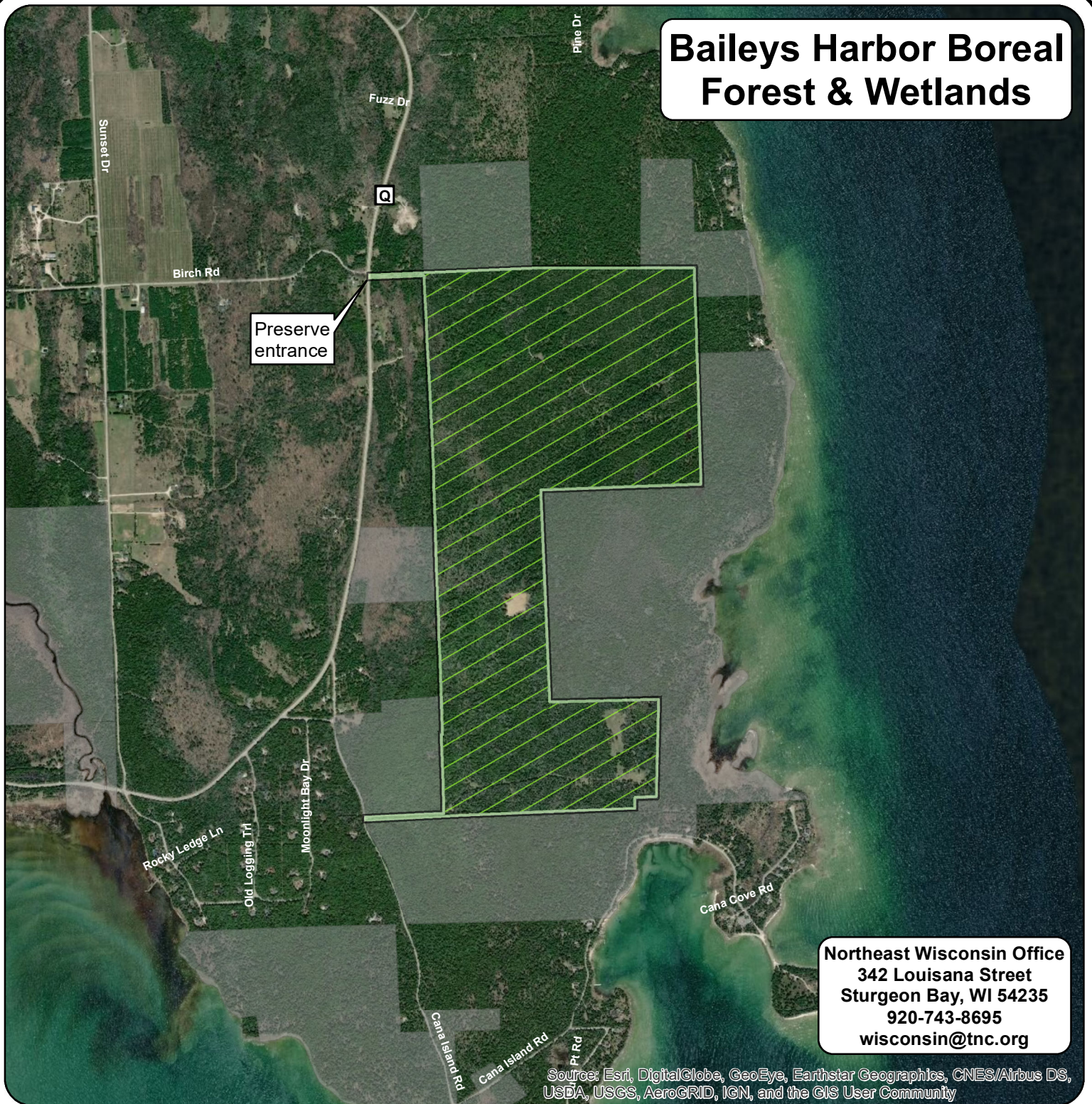




Baileys Harbor Boreal Forest & Wetlands



Northeast Wisconsin Office
 342 Louisiana Street
 Sturgeon Bay, WI 54235
 920-743-8695
wisconsin@tnc.org

Source: Esri, DigitalGlobe, GeoEye, Earthstar Geographics, CNES/Airbus DS, USDA, USGS, AeroGRID, IGN, and the GIS User Community

-  Nature Conservancy Preserve
-  Wisconsin DNR

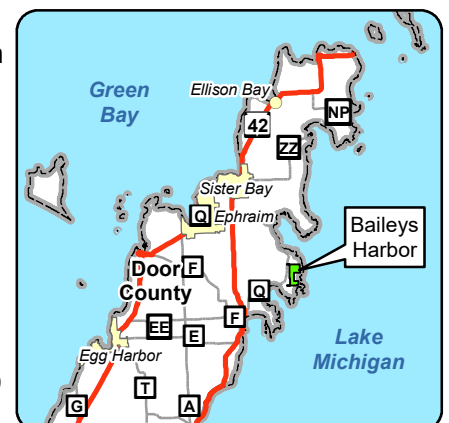
The Nature Conservancy

Protecting nature. Preserving life.



0 0.1 0.2 0.3 0.4 0.5
 Miles

From Highway 57 in Baileys Harbor turn right onto County Highway Q. Continue on County Highway Q for approximately 4.4-miles. The entrance will be on your right just before the intersection of Birch Road and County Highway Q. Visitors should park on the shoulder of Birch Road and not in front of the gate leading into the property.



3/6/2019

web_map_BaileysHarbor.mxd