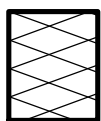
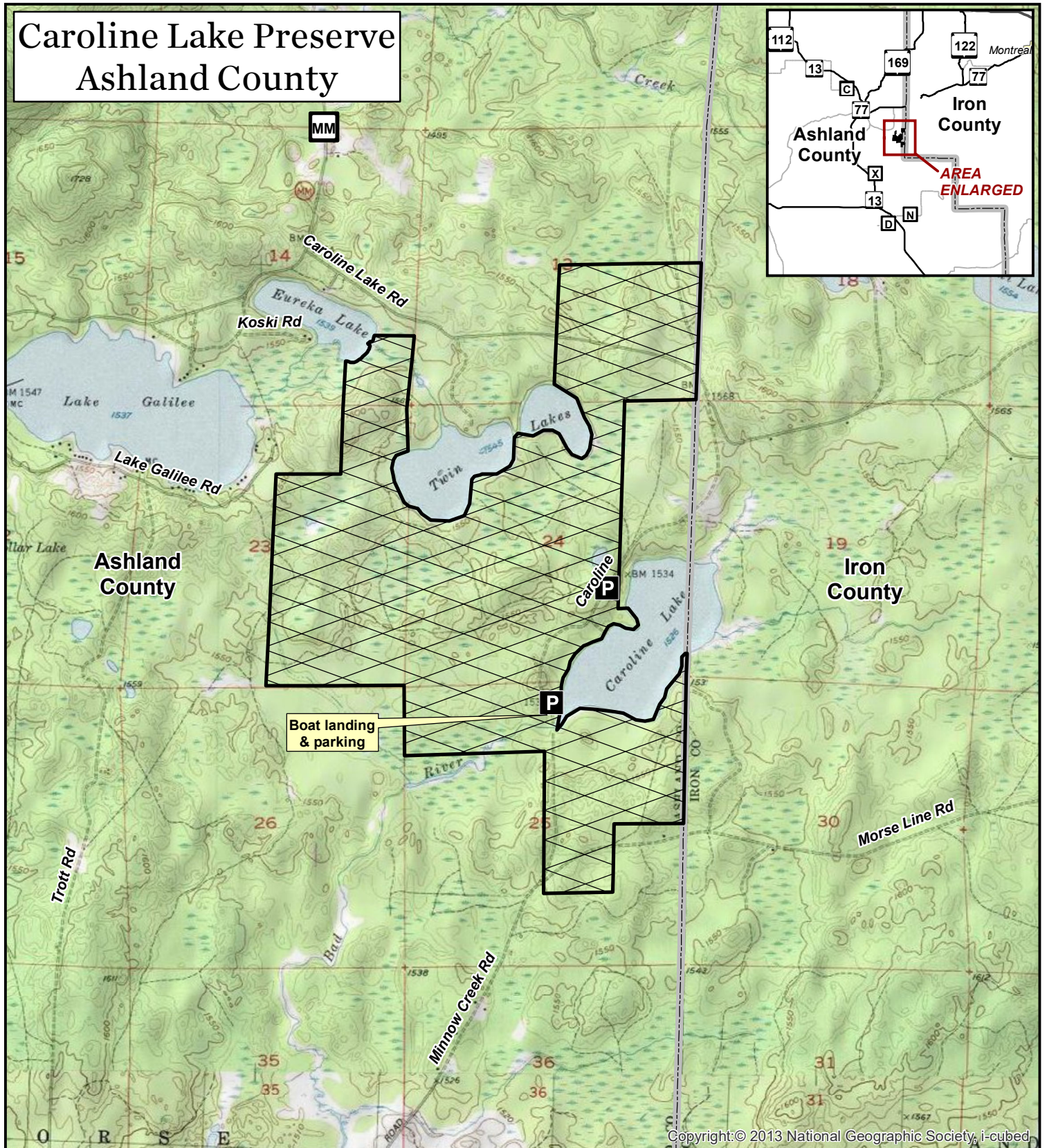


Caroline Lake Preserve Ashland County



Property of The Nature Conservancy;
open for trapping, deer, turkey, small
game and bear hunting.



County boundary



Parking



0 0.25 0.5 0.75 1 Miles 1:30,000

Caroline Lake is located
in Ashland County,
Wisconsin, Morse
Township, T44N-R2W,
sections 13, 14 & 23-25;
1,078 acres.

The Nature Conservancy 
Protecting nature. Preserving life.