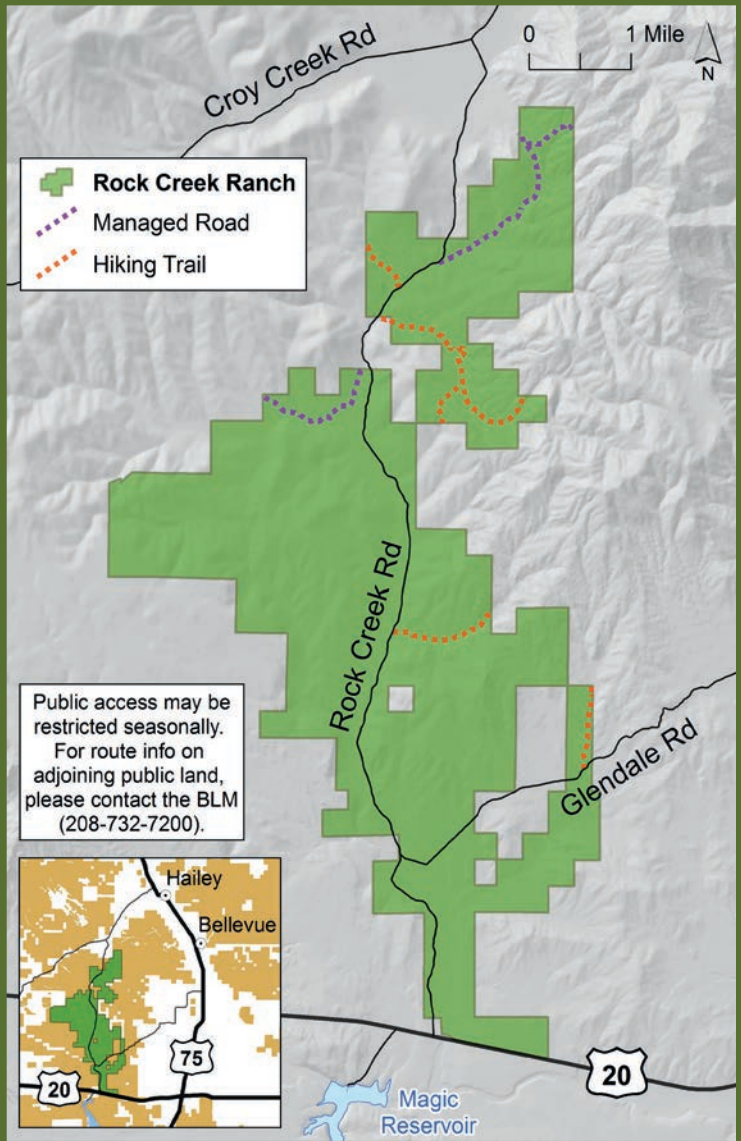




Trent Jones/Hall and Hall



## ROCK CREEK USER RULES

No camping

No fires

Firearms only for hunting

Follow all state hunting and fishing regulations

Motorized vehicles on county and motorized roads only

Pack out your trash

Please park in pullouts, do not drive over dry grass

*Please respect private property, we want you to enjoy it,  
so please take care of it!*

### Public welcome, enjoy:

mountain biking on trails and roads,  
hiking, picnicking,  
photography, skiing, bird watching,  
hunting, and fishing

# ROCK CREEK RANCH

where the possibilities are endless



Protecting nature. Preserving life.™

### Idaho Chapter

The Nature Conservancy in Idaho strives to accomplish conservation that matters, with big impacts on vast landscapes – guided by science, collaboration and practical solutions. As the demands on natural resources grow and change, the Conservancy strives to adapt to those changes and respond in ways that benefit people and nature.



Wood River Land Trust protects and restores land, water and wildlife habitat in the Wood River Valley and its surrounding areas. The trust works cooperatively with private landowners and local communities to ensure these areas are protected now and for future generations.



COVER PHOTO CREDITS: Top Row: John Finnell, Bottom: Caroline Clawson/TNC



Protecting nature. Preserving life.™

### Idaho Chapter







Daphne Wuehler



Lisa Eller/TNC

John Finnell

John Finnell

## THE RANCH

Located near Hailey, Idaho, the 10,400-acre Rock Creek Ranch was recently one of the largest unprotected, private properties in Blaine County. A haven for wildlife viewing, the ranch includes key fish and wildlife habitat, migration corridors and sage-grouse leks that support species reproduction. Through progressive conservation efforts, Wood River Land Trust and The Nature Conservancy helped protect the ranch with the long-term goal for the Idaho Department of Fish and Game to manage the property.



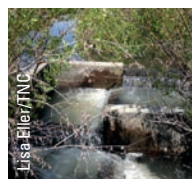
Lisa Eller/TNC



Nick Rice

## LAND

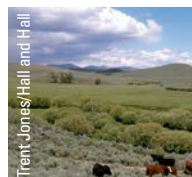
In 2014, Rock Creek Ranch was purchased by the Land Trust and the Conservancy at below-market cost from the Rinker family. Working with the Natural Resources Conservation Service, the ranch was protected from development by two permanent grassland conservation easements. The ranch will illustrate firsthand how conservation and sustainable ranching can work together to promote healthy grasslands. Managed grazing will help the Land Trust and the Conservancy achieve long-term objectives for wildlife habitat improvement.



Lisa Eller/TNC

## WATER

The ranch property contains several tributaries to the Big Wood River: Rock Creek, Little Rock Creek, Big Poison Creek and Little Poison Creek, along with several unnamed streams. Future ranch management plans include restoring streams and restricting grazing in riparian areas. Improvements like willow planting along stream banks and reconstructing stream channels will benefit water quality and wildlife habitat.



Trent Jones/Hall and Hall

## AIR

Rock Creek Ranch has habitat that is valuable to sustaining sage grouse populations. Sage grouse occupy two leks on the property, and five more leks are located within one mile of the ranch. A number of leks with historic or undetermined status can be found on or near the property. Short-eared owls, eagles, many species of songbirds and waterfowl, and the yellow-billed cuckoo, a species currently listed as a "candidate," also occur within the vicinity of the property.

## AND YOU.



John Finnell

### EXPLORE: THE RANCH IS FREE AND OPEN TO THE PUBLIC.

This working cattle ranch located just outside of Hailey, provides exceptional hiking, mountain biking and wildlife viewing opportunities. Winter offers plenty of cross-country skiing and snowshoeing. Motorized vehicles are limited to designated roads, and camping is strictly prohibited. Seasonal restrictions may apply to all types of access.

### GET INVOLVED: LEND YOUR HANDS

Volunteers help The Nature Conservancy and Wood River Land Trust devote a major portion of funds to land conservation, keeping effectiveness high and costs low.

### GIVE BACK:

Your support will help achieve lasting results for nature and people. Give a gift today and make a positive, lasting impact on conservation in Idaho.

Visit [nature.org/idaho](https://nature.org/idaho) or [WoodRiverLandTrust.org](https://WoodRiverLandTrust.org) for more information.