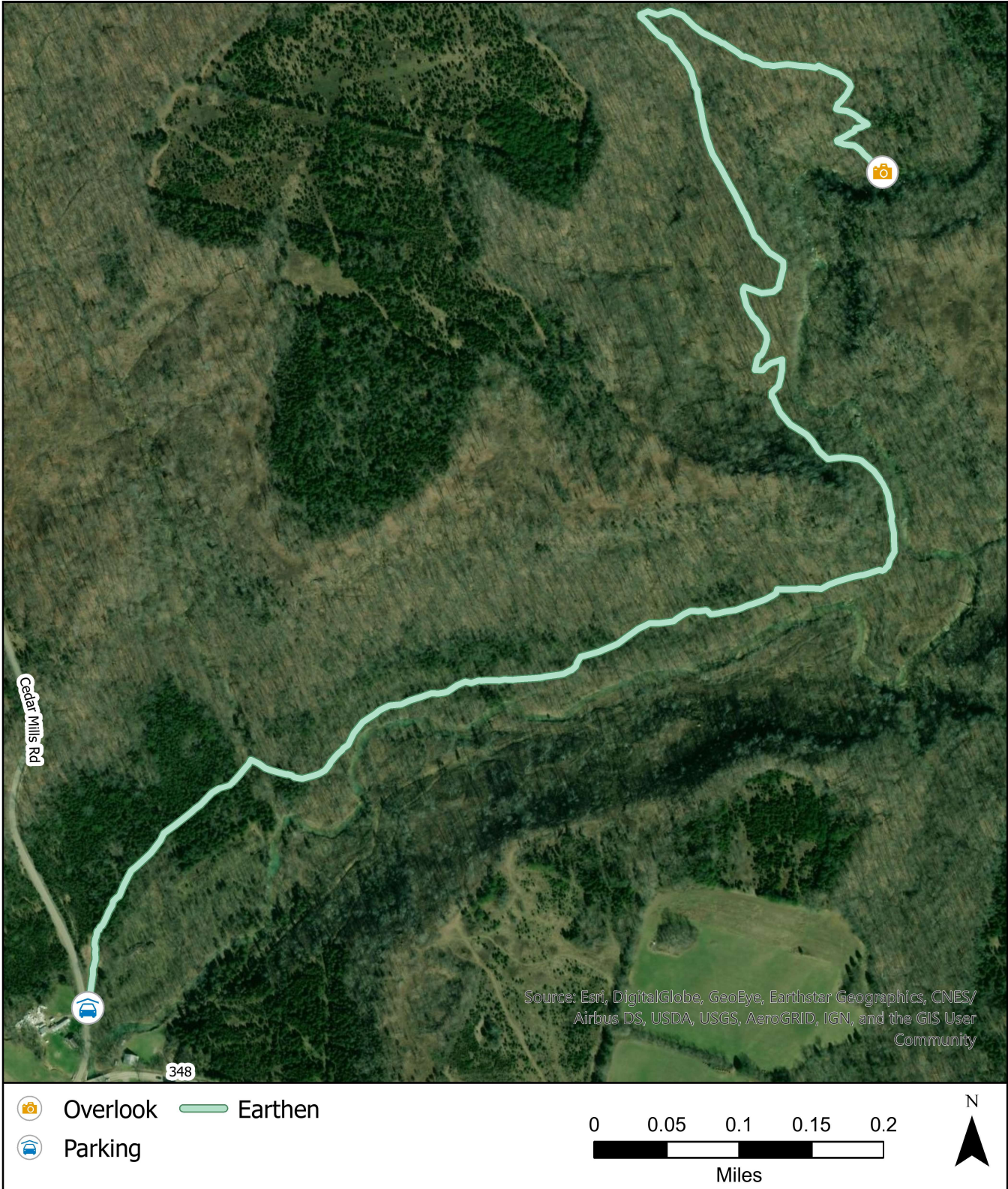


The Helen C. Black Cedar Falls Trail at The Edge of Appalachia Preserve



Please stay on the trail at all times.

Dogs are not allowed on the trail.

In the case of an emergency- Dial 911
 Contact us- ohio@tnc.org 614-717-2770

GPS Coordinates: 38.82320, -83.39289
 Length: 3 miles round trip Difficulty: Moderate
 Elevation Gain:
 Check out other trails at The Edge of Appalachia Preserve located at 38.75928, -83.40695
 38.78021, -83.41724 & 38.77063, -83.42599
 & 38.74839, -83.46402