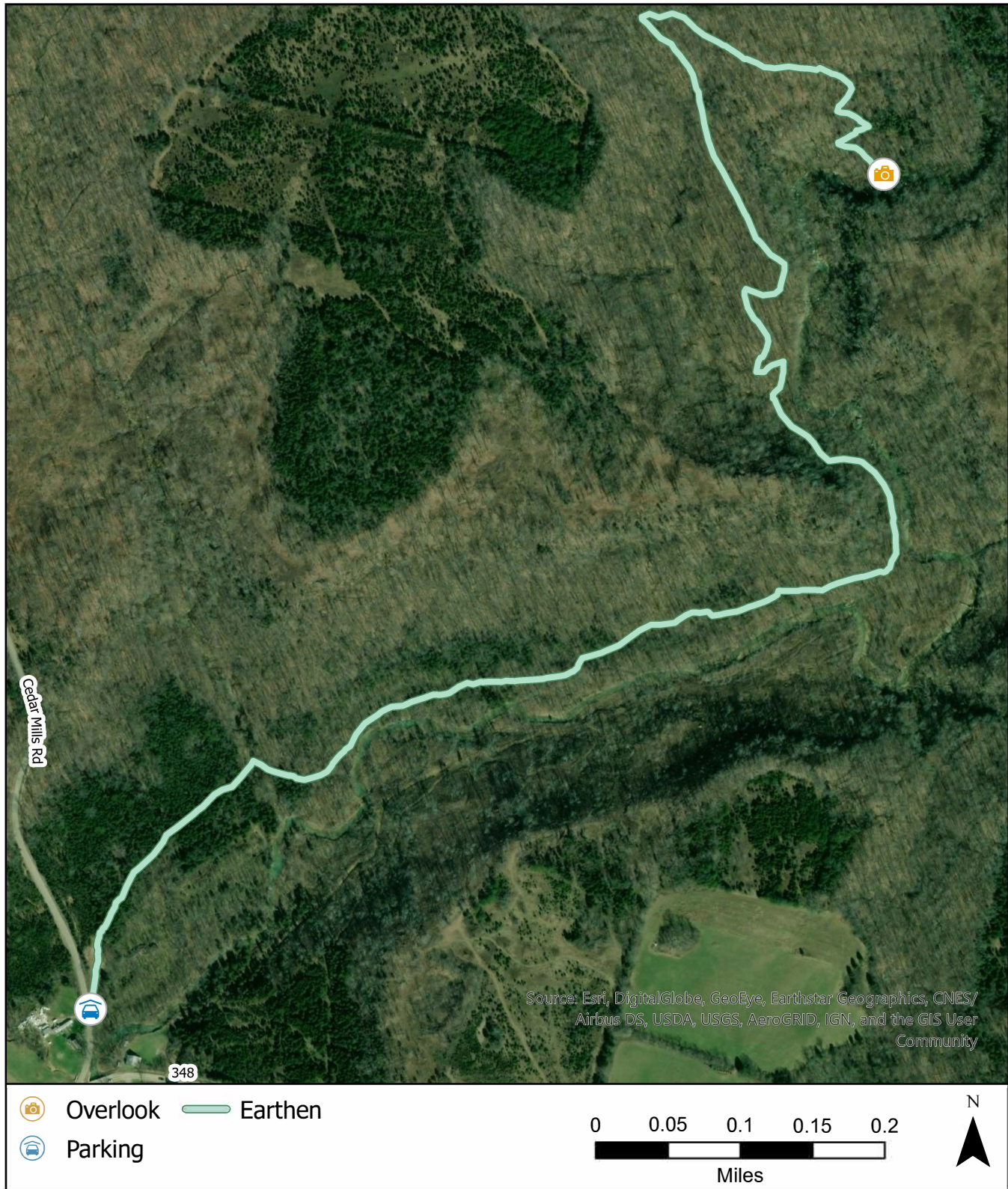


## The Helen C. Black Cedar Falls Trail at The Edge of Appalachia Preserve



Please stay on the trail at all times.

Dogs are not allowed on the trail.

In the case of an emergency- Dial 911  
Contact us- [ohio@tnc.org](mailto:ohio@tnc.org) 614-717-2770

GPS Coordinates: 38.82320, -83.39289  
Length: 3 miles round trip   Difficulty: Moderate  
Elevation Gain: 364 feet  
Check out other trails at The Edge of Appalachia  
Preserve located at 38.75928, -83.40695  
38.78021, -83.41724 & 38.77063, -83.42599  
& 38.74839, -83.46402