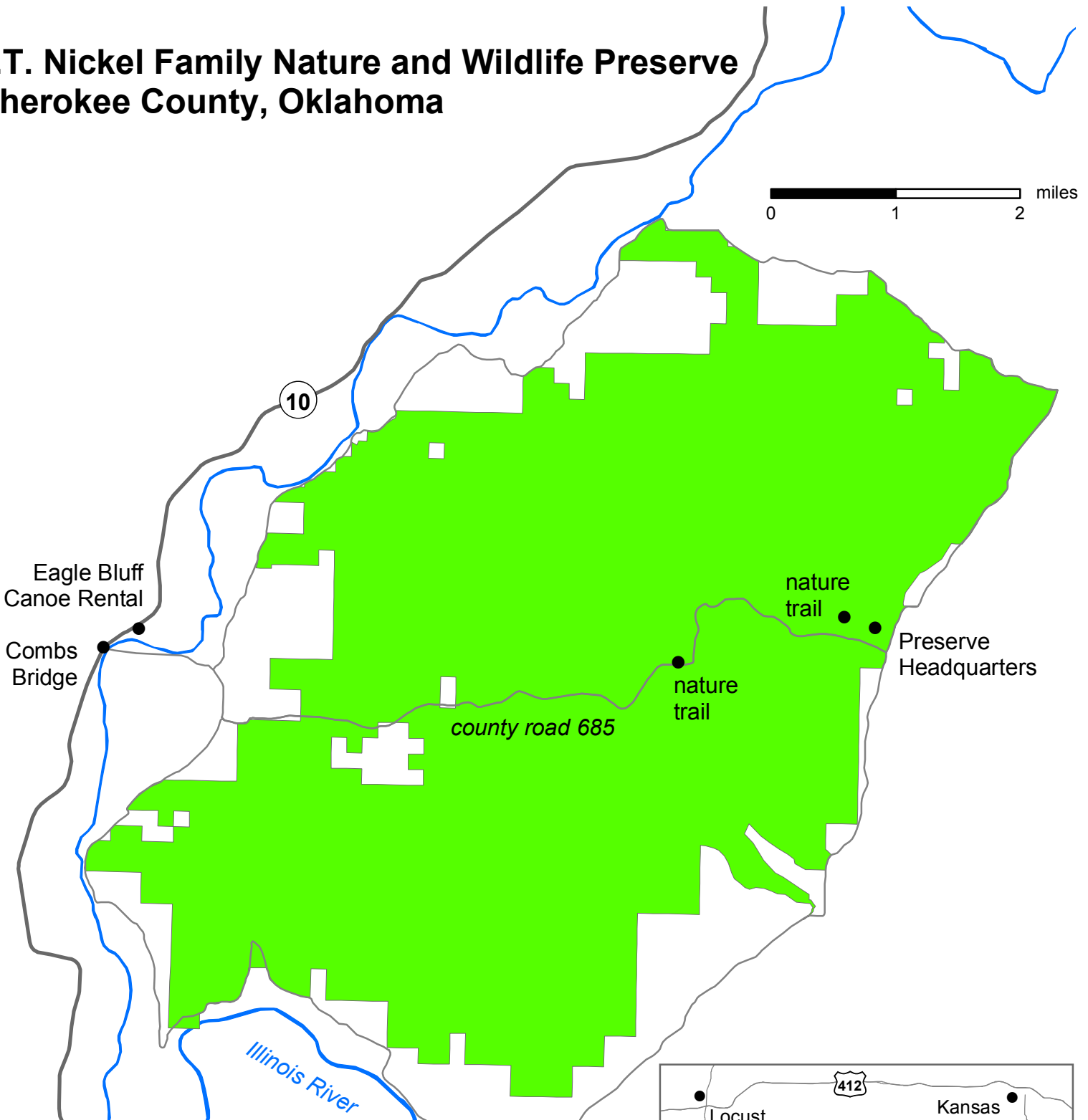


# J.T. Nickel Family Nature and Wildlife Preserve Cherokee County, Oklahoma



## Directions to the Preserve, from Tahlequah:

From the intersection of Highways 82 and 51, follow Highway 51 east about 2 miles to Highway 10 (Scenic 10). Turn north on Highway 10 and go 10 miles to 569 Road, approximately ½ mile past Peyton's Place Float Resort. (If you come to Eagle Bluff Canoe Rental, you have gone too far.) Turn right on 569 Road and cross Combs Bridge over the Illinois River. Go approximately 1 mile and stay to the right at the split in the road. Continue following 569 Road for another ½ mile and turn left onto 685 Road. Follow the road east across the Preserve (about 6 miles to the Preserve Headquarters on the left.)

