

---

# KEALAKEKUA BAY COMMUNITY ACTION PLAN

---



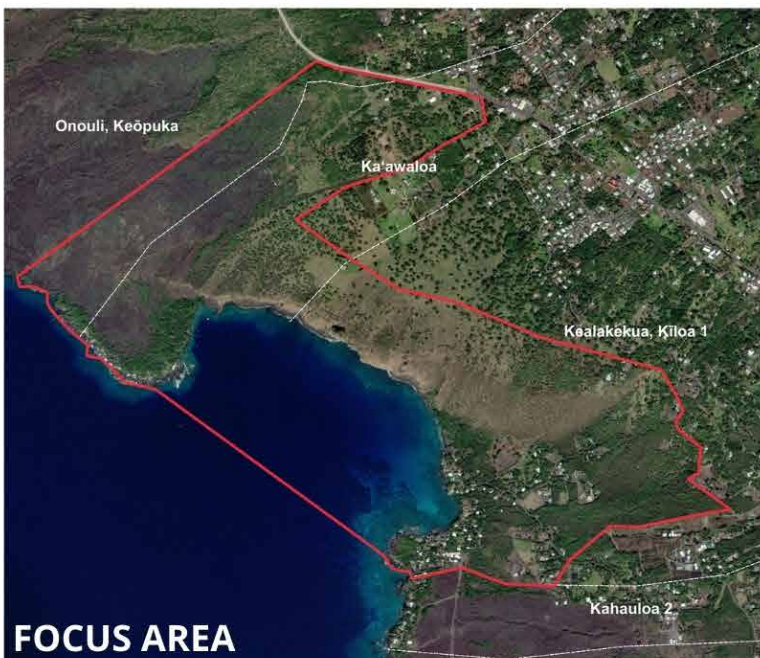
2022



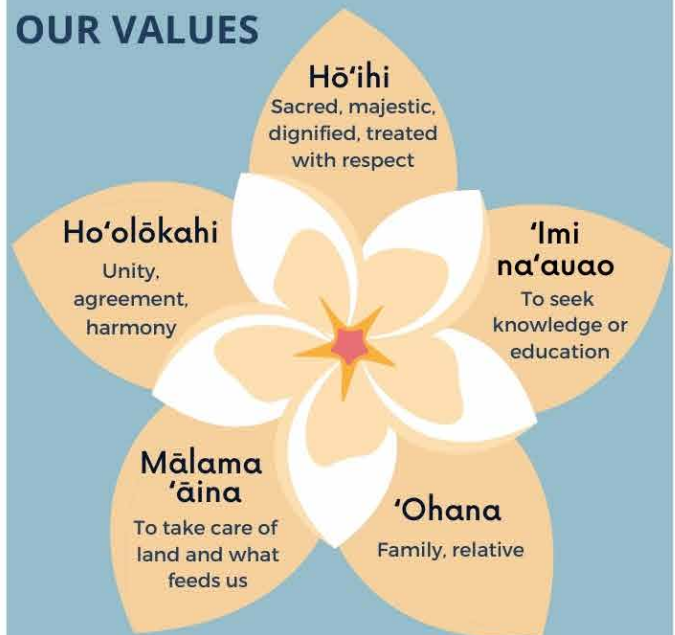
# KEALAKEKUA BAY COMMUNITY ACTION PLAN

## OUR VISION

Kealakekua Bay is a living, spiritual place. It is a vibrant ecosystem interwoven with traditional knowledge and practices, honored and cultivated through understanding and reverence of this wahi pana (sacred place).



## OUR VALUES



## CODE OF CONDUCT

- Be respectful of village residents and private property
- Be observant (kilo)
- Tread lightly
- Quiet hours 5 pm - 8 am
- Relationship building with visitors
- Compliance of the rules on signage



- Treat this sacred place with reverence
- Keep distance from wildlife
- Coral is a living animal - Please float above and don't step on it
- Safety first - When in doubt, don't go out
- Bring plenty of water
- Pack out what you pack in

- Show respect and reverence for cultural and archeological sites and their practitioners
- Stay on trails
- Refrain from entering archeological and spiritual areas



- Harvest for the table, not the freezer
- Share your catch
- Respect traditional fishing practices
- Respect local fishing rules

## WHAT WE WANT TO MĀLAMA CURRENT HEALTH STATUS



**Fishing and Gathering**  
POOR

**Terrestrial Resources**  
POOR



**Kai Ola Kanaloa**  
(The life in the ocean realm)  
FAIR

**Cultural Sites**  
FAIR



**Community Well-being**  
FAIR

**Protected Species**  
FAIR



### POOR

- Requires lots of effort to manage properly
- Will lose target within 10 years if no action is taken

### FAIR

- Issues with abundance & healthy ecosystem
- Some species depleted/absent

### GOOD

- Some impacts in acceptable range
- May need human intervention

### VERY GOOD

- Native species thriving
- Natural cycles unimpacted
- Sustainable harvesting

## IMPACTS ON WHAT WE WILL MĀLAMA CURRENT SEVERITY RANKING



**Disrespectful Human Behavior**  
VERY HIGH

**Climate Change**  
VERY HIGH



**Exceeding Carrying Capacity**  
HIGH

**Human Waste**  
HIGH



**Non-Pono Fishing**  
MEDIUM

**Non-Native Species**  
MEDIUM



### VERY HIGH

- Very widespread
- Resources will be eliminated
- Not fixable

### HIGH

- Widespread
- Seriously degraded
- Fixable (costly)

### MEDIUM

- More localized
- Moderately degraded
- Fixable (reasonable)

### LOW

- Very localized
- Slightly impaired
- Easily fixable

Threats ranked based on scope, severity, and irreversibility

## NIHO (STRATEGIES)

The three niho reflect the foundational goal of adaptive community-led stewardship for Kealakekua, meant to strengthen reciprocal pilina (relationships, connections) among people, place, and nature.

I ka wā ma mua, I ka  
wā ma hope

‘Ike kupuna (elder knowledge) is the foundation that is integrated into education programs, outreach, and research activities.



E mālama ‘oukou iā mākou,  
a mālama mākou iā ‘oe

Kealakekua is respected,  
peaceful, and stewardship  
is led by the community.

I ola ‘oe,  
i ola mākou nei

The ecosystems are  
healthy, resilient and  
abundant with native  
species for all to  
benefit.



## OBJECTIVES



### 1.1 Objective

Healthy human carrying capacity limits determined and management actions implemented (including rest day closures) to manage commercial and visitor use by 2027.

Outreach and education campaigns implemented for residents and visitors guided by the mo'olelo of Kealakekua by 2023.

### 1.2 Objective

### 1.3 Objective

Ho'ala Kealakekua's organizational capacity built to successfully co-manage stewardship of Kealakekua in partnerships with the government agencies by 2023.

### 2.1 Objective

The 'ike kupuna and mo'olelo of Kealakekua integrated into management actions, outreach and education for residents and non-residents by 2024.

A cultural landscape preservation and stewardship partnership program established by 2025.

### 2.2 Objective

### 2.3 Objective

Hikiau Heiau is a center of learning that drives development of community programs by 2023.



### 3.1 Objective

Past and present ecological conditions understood and management actions implemented to restore Kealakekua's coral reefs by 2023.

Baseline water quality conditions assessed and actions implemented to improve water quality by 2025.

### 3.2 Objective

### 3.3 Objective

Invasive species reduced by 50% in priority areas and native species abundance increased by 2027.

Current MLCD rules evaluated and fishing rules modified as appropriate by 2023.

### 3.4 Objective

### 3.5 Objective

Violations of marine wildlife rules decreased by 50% by 2024.