

ECHO LAKE NATURE PRESERVE

A Superior Vista

**LOCATION:**

Central Upper Peninsula



SIZE: 480 acres

**TRAIL LENGTH:**

1.2 miles of trail



DIFFICULTY: Moderate

**AUDIO TOUR AVAILABLE:**

Get the insider's view of this preserve with a free self-guided tour on the TravelStories app! To learn more, visit nature.org/miexplore.



© Dick Huey

It's one of the Marquette area's best-kept secrets.

With its dramatic granite outcroppings, dazzling views and the serene blue waters of the lake it's named for, the Echo Lake Nature Preserve offers hikers a breathtaking escape into nature just a 20-minute drive from town.

After you hike through tall stands of hardwood trees—brilliantly yellow in the fall—Echo Lake appears before you like a place out of time. Here, river otters play, and great blue herons stand sentinel in the shallows. And there's still much more to see.

The trail leads you through woods and wetlands around the northern side of the lake. Go left at the junction to visit the rocky peninsula that juts out into the lake, crowned by tall pines. Or, for a more challenging hike, keep right to continue your climb.

As you emerge on the exposed rock of the summit, a spectacular view unfolds of the surrounding forests where bears, bobcats and even the elusive Echo Lake wolf pack roam. During leaf-off periods, you can glimpse Lake Superior's vast expanse along the northeastern horizon, while Echo Lake reflects the sky from below.

It's a memory worth keeping.



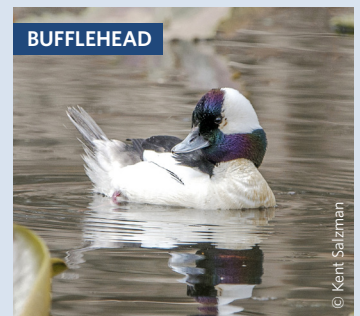
The Nature Conservancy (TNC) established the Echo Lake Preserve in 2010, when the land was generously donated by the J.A. Woollam Foundation. Some of the forest around it was also protected in the "Big U.P. Deal," a collaboration between TNC and the State of Michigan that conserved more than 270,000 acres of Upper Peninsula (U.P.) forests in 2005. © Dick Huey

YOU SHOULD VISIT IF...

You're looking for that perfect U.P. snapshot! The cliffs of Echo Lake make an amazing backdrop for photographers—just one of many sights to capture with your camera. Around each bend, unexpected splashes of color can catch your eye, from the varicolored bedrock to unique fungi. In the spring, search the forest floor for distinctive wildflower blooms such as jack-in-the-pulpit or large-flowered bellwort, or come in the fall for the vibrant leaves.

Wildlife to watch for include:

- Beaver
- Wood frog
- Bufflehead
- Blue-spotted salamander
- Alder flycatcher
- Downy woodpecker
- Yellow-bellied sapsucker
- Magnolia warbler

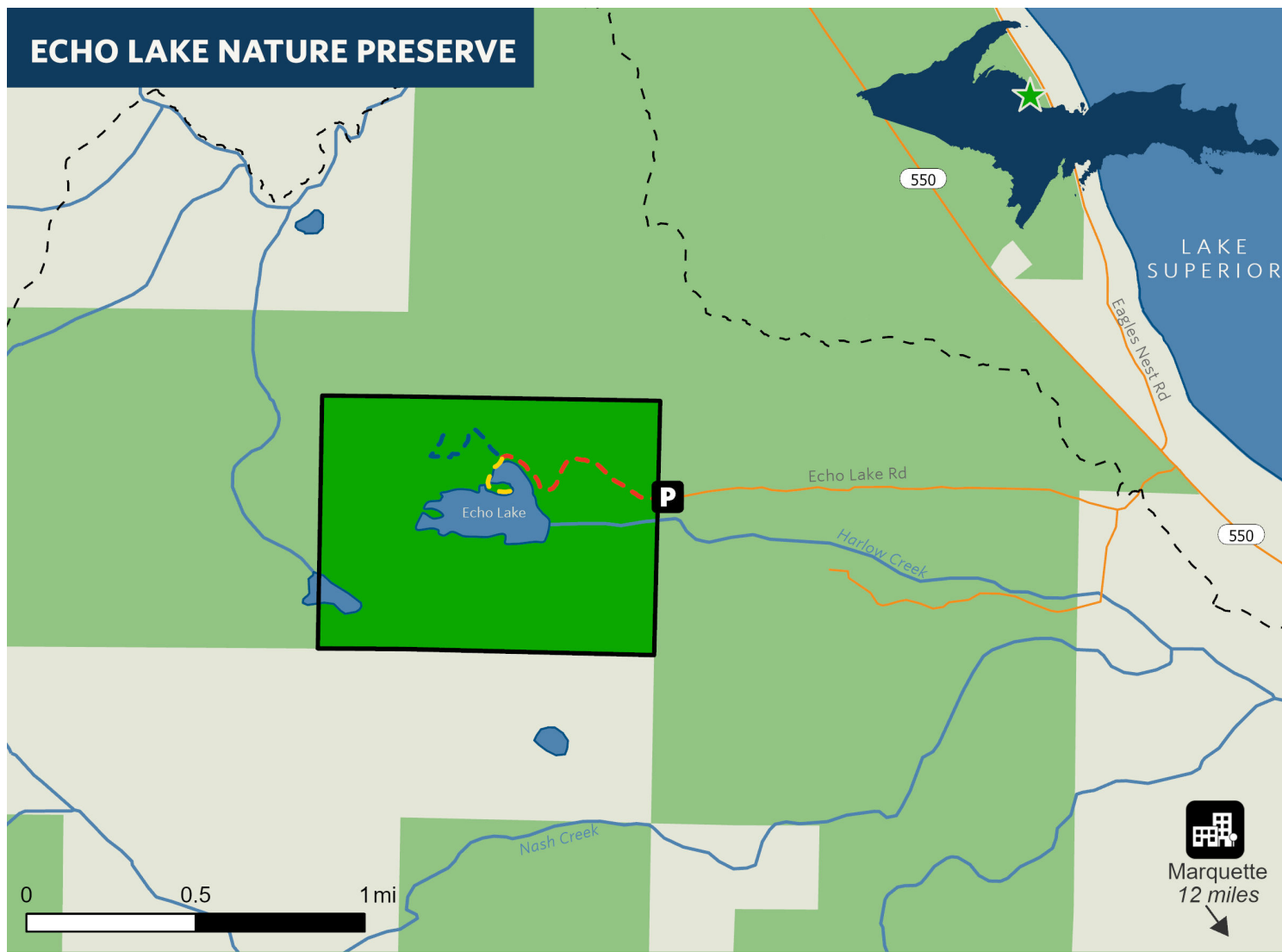
BUFFLEHEAD

© Kent Salzman



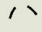




YELLOW-BELLIED SAPSUCKER

© Dennis Church/Flickr

ECHO LAKE NATURE PRESERVE



LEGEND

-  Echo Lake Nature Preserve
-  Protected Land: Privately Owned
-  North Country Trail
-  Red Trail (0.6 mi)
-  Blue Trail (0.4 mi)
-  Yellow Trail (0.2 mi)
-  Parking Area



HOW TO GET THERE

Directions from Marquette, MI: Take County Road 550/Big Bay Road north toward Big Bay. Approximately 7.5 miles north of Marquette, turn west (left) onto an unmarked two-track road (just **before** the junction with Eagles Nest Road on the right). Continue 1.5 miles on the two-track road until you reach the gate at the preserve boundary, where you can park.

MAKE TODAY A NATURE DAY!

Nearby points of interest include:

- Hogback Mountain Trailhead, 4.6 mi
- Sugarloaf Mountain Trailhead, 5.7 mi
- Presque Isle Park, 11 mi: marquettetmi.gov
- Laughing Whitefish Lake Preserve, 31 mi: nature.org/miexplore
- Lodging, food and more: travelmarquette.com

TIPS FOR A GREAT VISIT

- The Echo Lake Nature Preserve is open year-round. However, the two-track road is not snowplowed, so access in the winter requires snowshoeing or skiing in from the highway.
- Before and after your hike, please use the boot brush at the trailhead to remove potential invasive seeds from your shoes.
- If you feel like making the trek, carrying a canoe to the lake is a great way to see the preserve from the water!
- Insect repellent and hiking shoes are recommended.
- Please leave pets at home.
- No camping or fires permitted.
- Please follow the rules posted at the preserve and online at nature.org/miexplore.

Thank you for protecting the land, water and wildlife of this place!