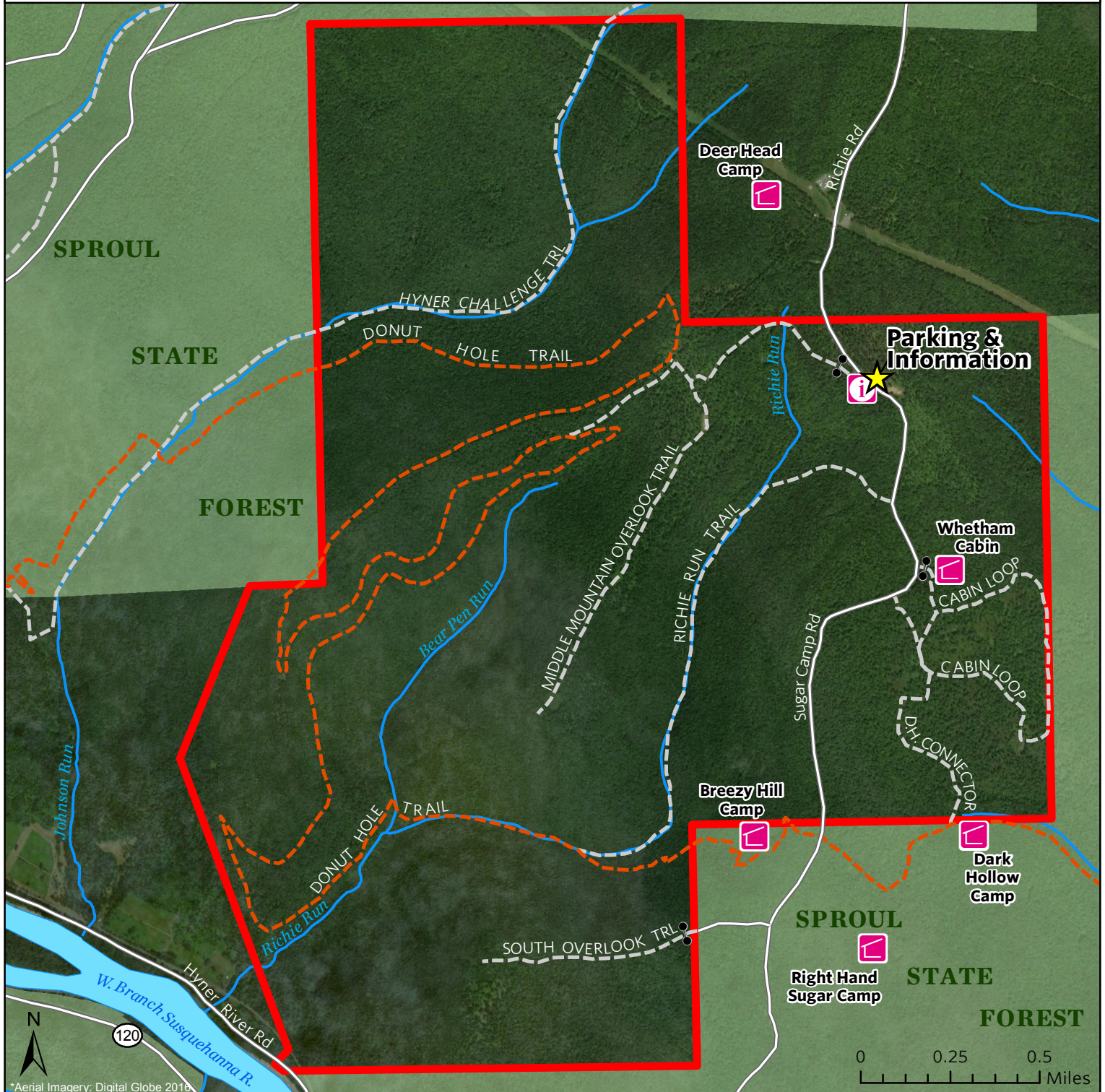



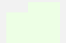


West Branch Forest Preserve

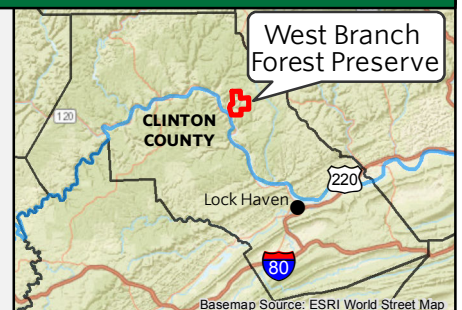
DMAP ID # 168

Updated: September 2018



*Aerial Imagery: Digital Globe 2016

-  Preserve Boundary
-  Other Protected Lands
-  Donut Hole Trail - Red Blaze (8 miles within preserve boundary)
-  Trails - Not Blazed



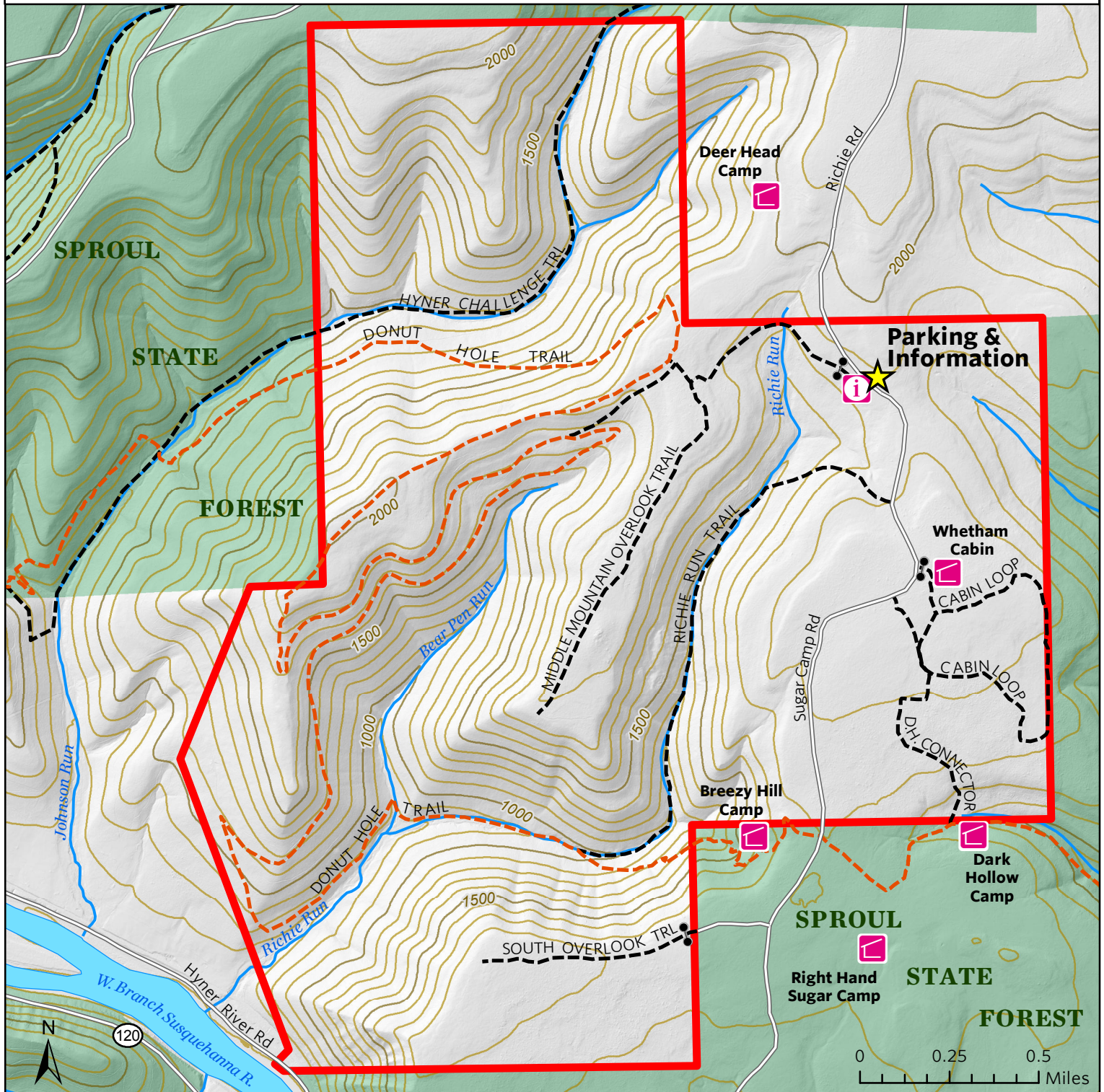
*This map is not a survey and should not be construed as one.





Parking: 41.323226 -77.574073

West Branch Forest Preserve

DMAP ID # 168

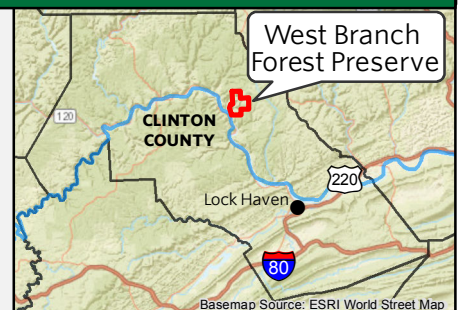
Updated: September 2018



-  Preserve Boundary
-  Other Protected Lands
-  Donut Hole Trail - Red Blaze (8 miles within preserve boundary)
-  Trails - Not Blazed



Parking: 41.323226 -77.574073



*This map is not a survey and should not be construed as one.

Basemap Source: ESRI World Street Map

West Branch (Clinton County)

Location: West Branch Forest (3,000 acres) is contiguous with the Sproul State Forest and is open for public hunting through cooperation with the Pennsylvania Game Commission, DMAP #168, WMU 2G.

Directions: West Branch Forest is located along Ritchie/Sugar Camp Road in Grugan and Gallagher Townships (Clinton County). Take Interstate 80 to Lock Haven Exit/Route 220. Take Route 220 North. Exit at Pine Creek/Route 44 North. Turn left off the exit ramp onto Route 44 North. Go approx. 10 miles, to the town of Waterville. Continue on 44 North another 7 miles to the junction of 664 & 44. Continue on 44 North past the Fin, Fur & Feather on the right. Go another 4 miles. You will pass under power lines, and a sub-station will be off to the left. Take your next left on Hyner Mountain Road towards Hyner View State Park. This road may not be marked with a road sign, but is across from Merrill Rd. Go one mile, and turn left on Ritchie Road (dirt road) just before the steep grade sign - you will see a sign and parking area for the "Hiding Bear Ski Trail." Go 2.2 miles to a fork in the road which goes right and straight. There will be a metal building on the right. Continue straight. Go .5 mile, until you pass the pipeline corridor. Go another 1.5 miles onto our property (look for the yellow signs), to the Information Kiosk on the right. Parking is available at the gate by the kiosk as well as along Ritchie and then Sugar Camp Road.

This property is enrolled in the Deer Management Assistance Program. (DMAP) DMAP is operated by the Pennsylvania Game Commission. Their website is <https://www.pgc.pa.gov>

For more information and questions call 570-643-7922 or www.nature.org/pahunting