



The Nature Conservancy in
Oregon 906 S. River Street
Enterprise, OR 97828-0386

tel 541 426-3458
fax 541 426-0228
nature.org/oregon

Date: February 15th, 2019

To: Tag Holders for Controlled Hunts 258A4, 5, 6 & 7

From: Chad Dotson, Zumwalt Preserve Steward, The Nature Conservancy

The area open for the Zumwalt cow elk hunts is 95% privately owned, and includes The Nature Conservancy's 33,000 acre Zumwalt Prairie Preserve. The Nature Conservancy uses a lottery system to grant antlerless elk hunting access on the Preserve. **In order to hunt on Zumwalt Prairie Preserve, you must have applied and received hunting access from The Nature Conservancy through the drawing system.**

There is no charge for this hunting opportunity, but if you intend to hunt on the Conservancy's property, we require the following:

- 1) Prior to hunting on the Preserve, you must check-in at the check station located at the Nature Conservancy office in Enterprise (906 S. River St, Enterprise, OR 97828). The check station will be open daily from 6am to noon starting November 11th. You may check-in up to 2 days before to your hunt season begins.
- 2) At the check-in station you will be given a "Success Response Form." Immediately following the hunt please return the success form by placing it in the drop box at the junction of Zumwalt and Duckett Roads, the drop box at the bottom of Trail Creek, or at the Nature Conservancy's office (906 S. River Street, Enterprise).

Included in this mailing are hunting rules, maps, and a description of ethical hunting expectations. **The rules must be followed carefully to retain hunting privileges.** Staff and contractors will patrol during the hunts to ensure safe and ethical hunting and to help answer questions. Refer to the maps to become familiar with the preserve boundaries and ensure there is no trespassing on neighboring private property. Georeferenced PDF hunt map, a Zumwalt Prairie Preserve boundary ".gdb" file for Garmin or ".kml" file for Google Earth can be found on the TNC Zumwalt hunt website, or email request at chad.dotson@tnc.org.

The Zumwalt Prairie Preserve's rugged terrain and limited access make the property a challenging and strenuous area to hunt. Be aware that **motorized vehicles are permitted only on public roads and the discharge of a firearm is not allowed within 100 yards of a public road on the prairie or within 50 yards of a public road in the canyons.**

Lastly, The Nature Conservancy is concerned about fragments of lead ammunition poisoning wildlife (such as hawks and eagles that scavenge gut-piles). Please consider using copper or other non-toxic bullets. For more information visit www.huntingwithnonlead.org.

If you have questions or need more information regarding the opportunity to hunt on the Zumwalt Prairie Preserve, you may reach me through email at chad.dotson@tnc.org.

Chad Dotson
Zumwalt Preserve Steward

Zumwalt Prairie Preserve Hunting Rules - Seasons 258A4, 5, 6 & 7

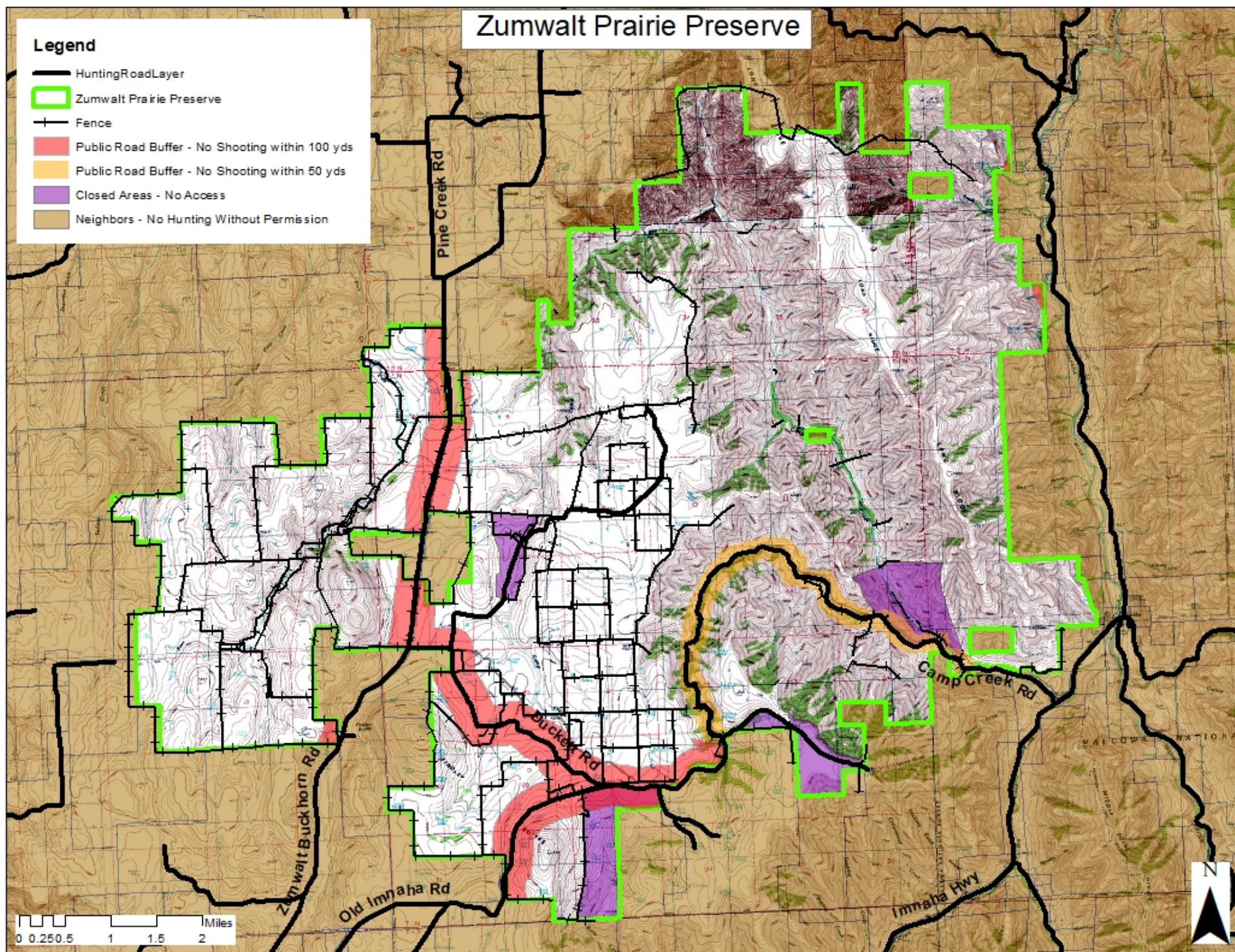
Hunting is an important part of The Nature Conservancy's management of the Zumwalt Prairie Preserve. The hunting program is designed to benefit habitats as well as provide for exceptional hunting experiences. However, hunting on this private land is a privilege and **your permission may be withdrawn at any time. Violators of Nature Conservancy policies will immediately lose access privileges. Violators of state laws will face prosecution.**

- All hunters must have been **granted permission by the Nature Conservancy** to hunt on the Zumwalt Prairie Preserve.
- Hunters must **check-in at the Nature Conservancy Office in Enterprise** prior to hunting. The check station will be open daily 6am to noon starting November 11th. You may check-in 2 days prior to your hunt season.
- **Discharge of a firearm is not allowed within 100 yards of a public road on the prairie or within 50 yards of a public road in the canyons.** For safety reasons, we require hunters to move away from public roads before firing.
- There is **no motorized access off public roads.**
- **Antlerless elk are the only animals to be harvested.** Shooting at any other animal or object is not allowed.
- **Hunt in a sportsmanlike manner.** Any wasteful or otherwise disrespectful activity towards elk or other hunters will result in loss of access.
- **Do not trespass on our neighbors.** Look for property boundary signs and metal flashing on fences indicating change in ownership.
- **Carry licenses and tags** while in the field and produce these documents if requested.
- **Do not enter the "Closed Areas"** as indicated on the maps provided. You may pack harvested elk out to the public road through the closed area in Camp Creek, but you are not allowed to travel from the public road to the north through the closed area in Camp Creek. See hunt map for "Closed Area" boundary and to determine access points.
- **Access to the preserve is by foot or horse/mule** with prior Conservancy approval (stock must be fed certified weed-free hay or pellets for at least 4 days prior to entry, and hunters must contact Conservancy staff at least one week prior to their hunt to obtain permission to use their animals).
- **Be sure of your target and beyond.** Cattle may be present throughout hunting seasons.
- **Do not remove anything** from the preserve other than the game you are hunting (this includes shed antlers and skulls).
- There is **no smoking or open flame** of any kind on the preserve.
- There is **no camping** on the preserve.
- Leave gates open or closed as you find them.
- Hunters may bring up to two guests onto the property to assist with their hunt. Only permitted hunters may carry a firearm.

Zumwalt Prairie Preserve

Legend

- HuntingRoadLayer
- Zumwalt Prairie Preserve
- Fence
- Public Road Buffer - No Shooting within 100 yds
- Public Road Buffer - No Shooting within 50 yds
- Closed Areas - No Access
- Neighbors - No Hunting Without Permission



Zumwalt Prairie Preserve

Legend

- HuntingRoadLayer
- Zumwalt Prairie Preserve
- Fence
- Public Road Buffer - No Shooting within 100 yds
- Public Road Buffer - No Shooting within 50 yds
- Closed Areas - No Access
- Neighbors - No Hunting Without Permission

