

Location Type 1 - Streetscapes with Restricted Growing Area

Location Characteristics

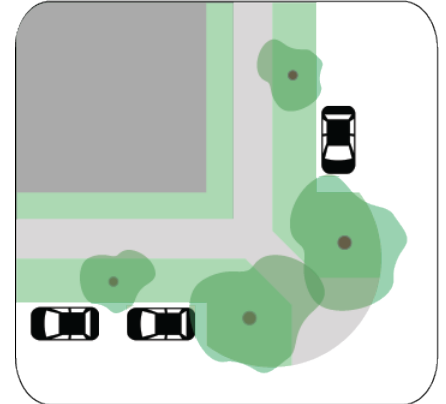
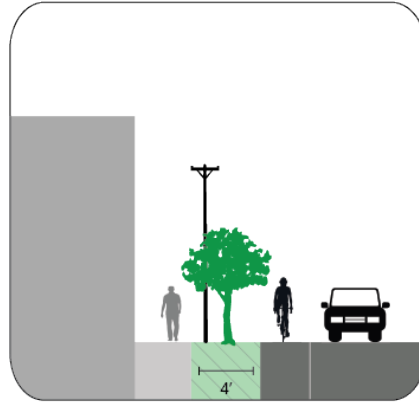
Overhead Powerlines and Utilities

Building Setback: < 10'

Sidewalks, on-street parking, bike paths

Median or Parkway Width: 3-6'

Examples: Downtown Central Avenue and Silver Street



Tree Characteristics

Mature Tree Height: <25'

Low Root Damage Potential

Low Litter Potential

Compacted Soil and Pollution Tolerant

Will Require Structural Pruning

Recommended Trees

Celtis reticulata
Cercis mexicana
Cercis occidentalis
Cercis reniformis
Cercis texicana
Cotinus obovatus
Forestiera neomexicana
Fraxinus cuspidata
*Lagerstroemia indica**
Prosopis glandulosa
Quercus oblongifolia

Netleaf Hackberry
 Mexican Redbud
 Western Redbud
 Oklahoma Redbud
 Texas Redbud
 American Smoketree
 New Mexico Privet
 Fragrant Ash
 Crape Myrtle
 Honey Mesquite
 Blue Oak

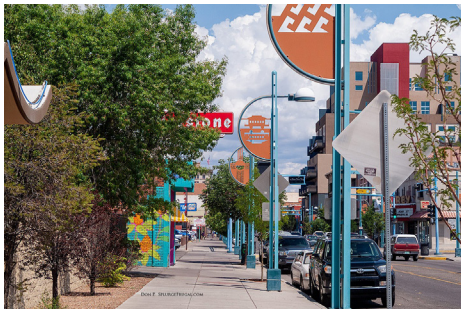


Photo Credit:

Location Type 2 - Streetscapes with Less Restricted Growing Area

Location Characteristics

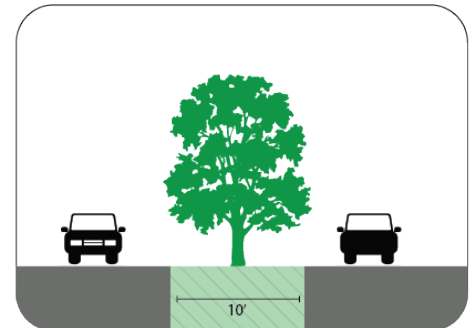
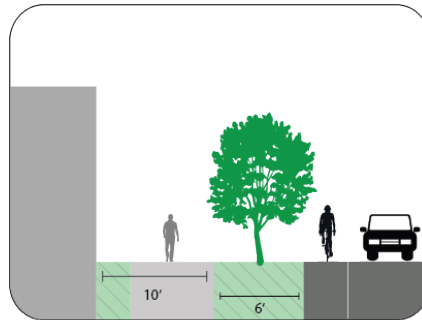
No Overhead Powerlines or Utilities

Building Setback: >10'

Sidewalks, on street parking, bike paths

Median or Parkway Width: ≥ 6'

Examples: Menaul Blvd, Big I medians, 12th and 4th St., Ridgcrest Neighborhood



Tree Characteristics

Mature Tree Height: Any

Low Litter Potential

Compacted Soil and Pollution Tolerant

Will Require Structural Pruning



Photo Credit:

Recommended Trees

Arbutus xalapensis
Celtis reticulata
Cercis mexicana
Cercis reniformis
Cercis texicana
Cercis occidentalis
Cedrus deodara
Chilopsis linearis
Cotinus obovatus
Crataegus ambigua
Forestiera neomexicana
Gymnocladus dioica
*Fraxinus cuspidata**
*Juniperus deppeana**
*Juniperus monosperma**
*Juniperus virginiana**
*Lagerstroemia indica**
*Leucaena retusa**
Maclura pomifera
*Parkinsonia x Cerdcidium**
Pinus eldarica
*Pinus pinea**
*Pistacia chinensis**
*Prosopis glandulosa**
Quercus arizonica
Quercus fusiformis
Quercus gravesii
Quercus ilex
Quercus muhlenbergii
Quercus oblongifolia
*Quercus suber**
Quercus texana
*Sapindus saponaria var. drummondii**
*Sophora secundiflora**
Rhus lanceolata
Ulmus x "Morton" Accolade™
Ulmus x "Frontier"
*Ulmus parvifolia**
Vitex agnus castus
Zelkova serrata

Texas Madrone
 Netleaf Hackberry
 Mexican Redbud
 Oklahoma Redbud
 Texas Redbud
 Western Redbud
 Deodar Cedar
 Desert Willow
 American Smoketree
 Russian Hawthorne
 New Mexico Privet
 Kentucky Coffeetree
 Fragrant Ash
 Alligator Juniper
 One-seed Juniper
 Eastern Red Cedar
 Crape Myrtle
 Golden Ball Lead Tree
 Osage Orange
 Palo Verde hybrids
 Afghan Pine
 Italian Stone Pine
 Chinese Pistache
 Honey Mesquite
 Arizona White Oak
 Escarpment Live Oak
 Chisos Red Oak
 Holly Oak
 Chinquapin Oak
 Blue Oak
 Cork Oak
 Texas Red Oak
 Western Soapberry
 Texas Mountain Laurel
 Prairie Flameleaf Sumac
 Accolade Elm
 Frontier Elm
 Lacebark Elm
 Chaste Tree
 Japanese Zelkova

**Location Type 3 - Public Recreation, Residential, or Commercial Places
- Lawn or High Irrigation -**

Location Characteristics

Potential Overhead Powerlines or Utilities

Building Setback: >10'

Variety of Users Considered

Lawn or High Irrigation

Examples: UNM Golf Course, Mountain

View Community Center, Ridgecrest

Neighborhood, and Tiguex Park



Recommended Trees

Tree Characteristics

Mature Tree Height: Site Specific

Water Needs: Adaptable to High Irrigation

Ornamental and Large Trees

Wildlife or Pollinator Benefit Desired

Follows "Right Tree in the Right Place"



Photo Credit:

- | | |
|--|-------------------------|
| <i>Celtis reticulata</i> | Nettleleaf Hackberry |
| <i>Cercis mexicana</i> | Mexican Redbud |
| <i>Cercis reniformis</i> | Oklahoma Redbud |
| <i>Cercis texicana</i> | Texas Redbud |
| <i>Cercis occidentalis</i> | Western Redbud |
| <i>Cedrus atlantica</i> | Atlas Cedar |
| <i>Cedrus deodara</i> | Deodar Cedar |
| <i>Forestiera neomexicana*</i> | New Mexico Privet |
| <i>Gymnocladus dioica</i> | Kentucky Coffeetree |
| <i>Fraxinus cuspidata</i> | Fragrant Ash |
| <i>Juniperus deppeana*</i> | Alligator Juniper |
| <i>Juniperus virginiana*</i> | Eastern Red Cedar |
| <i>Lagerstroemia indica</i> | Crape Myrtle |
| <i>Maclura pomifera*</i> | Osage Orange |
| <i>Pinus eldarica</i> | Italian Stone Pine |
| <i>Pinus pinea</i> | Afghan Pine |
| <i>Pistacia chinensis</i> | Chinese Pistache |
| <i>Platanus mexicana</i> | Mexican Sycamore |
| <i>Populus deltoides</i> | Eastern Cottonwood |
| <i>Populus deltoides var. wislizeni</i> | Rio Grande Cottonwood |
| <i>Prosopis pubescens*</i> | Screwbean Mesquite |
| <i>Prunus mexicana</i> | Mexican Plum |
| <i>Quercus arizonica</i> | Arizona White Oak |
| <i>Quercus fusiformis</i> | Escarpment Live Oak |
| <i>Quercus gravesii</i> | Chisos Red Oak |
| <i>Quercus ilex</i> | Holly Oak |
| <i>Quercus muhlenbergii</i> | Chinquapin Oak |
| <i>Quercus suber*</i> | Cork Oak |
| <i>Quercus texana</i> | Texas Red Oak |
| <i>Quercus virginiana</i> | Southern Live Oak |
| <i>Sapindus saponaria var. drummondii*</i> | Western Soapberry |
| <i>Sophora secundiflora</i> | Texas Mountain Laurel |
| <i>Rhus lanceolata</i> | Prairie Flameleaf Sumac |
| <i>Taxodium mucronatum*</i> | Montezuma Cypress |
| <i>Ulmus x "Morton" Accolade™</i> | Accolade Elm |
| <i>Ulmus x "Frontier"</i> | Frontier Elm |
| <i>Ulmus parvifolia</i> | Lacebark Elm |
| <i>Vitex agnus castus</i> | Chaste Tree |
| <i>Zelkova serrata</i> | Japanese Zelkova |

* These species have further site specific needs found in Master List

**Location Type 4 - Public Recreation, Small-Large Residential, or Commercial Places
- Xeriscape or Low to Medium Irrigation -**

Location Characteristics

Potential Overhead Powerlines or Utilities

Building Setback: Varies

Variety of Users Considered

Xeriscaped or Low-Medium Irrigation

Examples: Plants of the Southwest



Tree Characteristics

Mature Tree Height: Site Specific

Water Needs: Low to Very Low

Ornamental and Large Trees

Wildlife or Pollinator Benefit Desired

Follows “Right Tree in the Right Place”



Photo Credit:

Recommended Trees

- | | |
|--|------------------------|
| <i>Arbutus xalapensis</i> | Texas Madrone |
| <i>Celtis reticulata</i> | Netleaf Hackberry |
| <i>Cercis mexicana</i> | Mexican Redbud |
| <i>Cercis reniformis</i> | Oklahoma Redbud |
| <i>Cercis texicana</i> | Texas Redbud |
| <i>Cercis occidentalis</i> | Western Redbud |
| <i>Cedrus atlantica</i> | Atlas Cedar |
| <i>Cedrus deodara</i> | Deodar Cedar |
| <i>Chilopsis linearis</i> | Desert Willow |
| <i>Cotinus obovatus</i> | American Smoketree |
| <i>Forestiera neomexicana</i> | New Mexico Privet |
| <i>Gymnocladus dioica</i> | Kentucky Coffeetree |
| <i>Fraxinus cuspidata*</i> | Fragrant Ash |
| <i>Juniperus deppeana*</i> | Alligator Juniper |
| <i>Juniperus monosperma*</i> | One Seed Juniper |
| <i>Juniperus virginiana*</i> | Eastern Red Cedar |
| <i>Lagerstroemia indica*</i> | Crape Myrtle |
| <i>Leucaena retusa*</i> | Golden Ball Lead Tree |
| <i>Maclura pomifera</i> | Osage Orange |
| <i>Parkinsonia x Cerdidium*</i> | Palo Verde Hybrids |
| <i>Pinus eldarica</i> | Italian Stone Pine |
| <i>Pinus pinea*</i> | Afghan Pine |
| <i>Pistacia chinensis*</i> | Chinese Pistache |
| <i>Prosopis glandulosa*</i> | Honey Mesquite |
| <i>Prosopis velutina*</i> | Velvet Mesquite |
| <i>Quercus arizonica</i> | Arizona White Oak |
| <i>Quercus fusiformis</i> | Escarpment Live Oak |
| <i>Quercus gravesii</i> | Chisos Red Oak |
| <i>Quercus ilex</i> | Holly Oak |
| <i>Quercus muhlenbergii</i> | Chinquapin Oak |
| <i>Quercus oblongifolia</i> | Blue Oak |
| <i>Quercus suber*</i> | Cork Oak |
| <i>Quercus texana</i> | Texas Red Oak |
| <i>Quercus virginiana</i> | Southern Live Oak |
| <i>Sapindus saponaria var. drummondii*</i> | Western Soapberry |
| <i>Sophora secundiflora*</i> | Texas Mountain Laurel |
| <i>Rhus lanceolata</i> | Praire Flameleaf Sumac |
| <i>Ulmus x "Morton" Accolade™</i> | Accolade Elm |
| <i>Ulmus x "Frontier"</i> | Frontier Elm |
| <i>Ulmus parvifolia*</i> | Lacebark Elm |

* These species have further site specific needs found in Master List

Location Type 5 - Small Green Stormwater Infrastructure (GSI) Features

Location Characteristics

Low points that collect stormwater runoff
 Soil decompacted to a depth ≥ 18 "
 Tree Trenches, Curb Cuts, and Scuppers
 Similar Restrictions to Location Type 1
Examples: Anthea Building, Pavillions parking lot, and SSCAFCA parking lot.



Recommended Trees

Tree Characteristics

Mature Tree Height: Site Specific
 Inundation Compatible up to 96 Hours.
 Pollution Tolerant
 Follows "Right Tree in the Right Place"

Celtis reticulata
*Cercis mexicana**
*Cercis occidentalis**
*Cercis reniformis**
*Cercis texicana**
*Crataegus ambigua**
Forestiera neomexicana
Fraxinus cuspidata
*Lagerstroemia indica**
Pistacia chinensis
*Prosopis glandulosa**
*Prosopis pubescens**
Salix gooddingii
Sapindus saponaria var. *drummondii**

Netleaf Hackberry
 Mexican Redbud
 Western Redbud
 Oklahoma Redbud
 Texas Redbud
 Russian Hawthorne
 New Mexico Privet
 Fragrant Ash
 Crape Myrtle
 Chines Pistache
 Honey Mesquite
 Screwbean Mesquite
 San Joaquin Willow
 Western Soapberry



Photo Credit:

Location Type 6 - Large Green Stormwater Infrastructure (GSI) Features

Location Characteristics

Low points that collect stormwater runoff
 Soil decompacted to a depth $\geq 18"$
 Basins, swales, and infiltration trenches
 Similar Restrictions to Location Type 1 or 2
Examples: SSCAFCA landscaping, Pete Domenici Courthouse, and Smith Brasher Hall.



Recommended Trees

Tree Characteristics

Mature Tree Height: Site Specific
 Innundation Compatible ≥ 96 Hours.
 Pollution Tolerant
 Follows "Right Tree in the Right Place"



Photo Credit:

- | | |
|---|-----------------------|
| <i>Celtis reticulata</i> | Netleaf Hackberry |
| <i>Cercis mexicana</i> * | Mexican Redbud |
| <i>Cercis occidentalis</i> | Western Redbud |
| <i>Cercis reniformis</i> * | Oklahoma Redbud |
| <i>Cercis texicana</i> * | Texas Redbud |
| <i>Crataegus ambigua</i> * | Russian Hawthorne |
| <i>Forestiera neomexicana</i> | New Mexico Privet |
| <i>Fraxinus cuspidata</i> | Fragrant Ash |
| <i>Gymnocladus dioica</i> * | Kentucky Coffeetree |
| <i>Platanus mexicana</i> | Mexican Sycamore |
| <i>Lagerstroemia indica</i> * | Crape Myrtle |
| <i>Maclura pomifera</i> * | Osage Orange |
| <i>Pistacia chinensis</i> | Chinese Pistache |
| <i>Populus deltoides</i> | Eastern Cottonwood |
| <i>Populus deltoides var. wislizeni</i> | Rio Grande Cottonwood |
| <i>Prosopis glandulosa</i> * | Honey Mesquite |
| <i>Prosopis pubescens</i> | Screwbean Mesquite |
| <i>Quercus arizonica</i> | Arizona White Oak |
| <i>Quercus ilex</i> * | Holly Oak |
| <i>Quercus muhlenbergii</i> | Chinquapin Oak |
| <i>Quercus suber</i> * | Cork Oak |
| <i>Quercus virginiana</i> * | Southern Live Oak |
| <i>Salix gooddingii</i> | San Joaquin Willow |
| <i>Sapindus saponaria var. drummondii</i> * | Western Soapberry |
| <i>Ulmus x "Morton" Accolade</i> ™ | Accolade Elm |
| <i>Ulmus x "Frontier"</i> | Frontier Elm |
| <i>Ulmus parvifolia</i> * | Lacebark Elm |
| <i>Taxodium mucronatum</i> | Montezuma Cypress |
| <i>Zelkova serrata</i> | Japanese Zelkova |