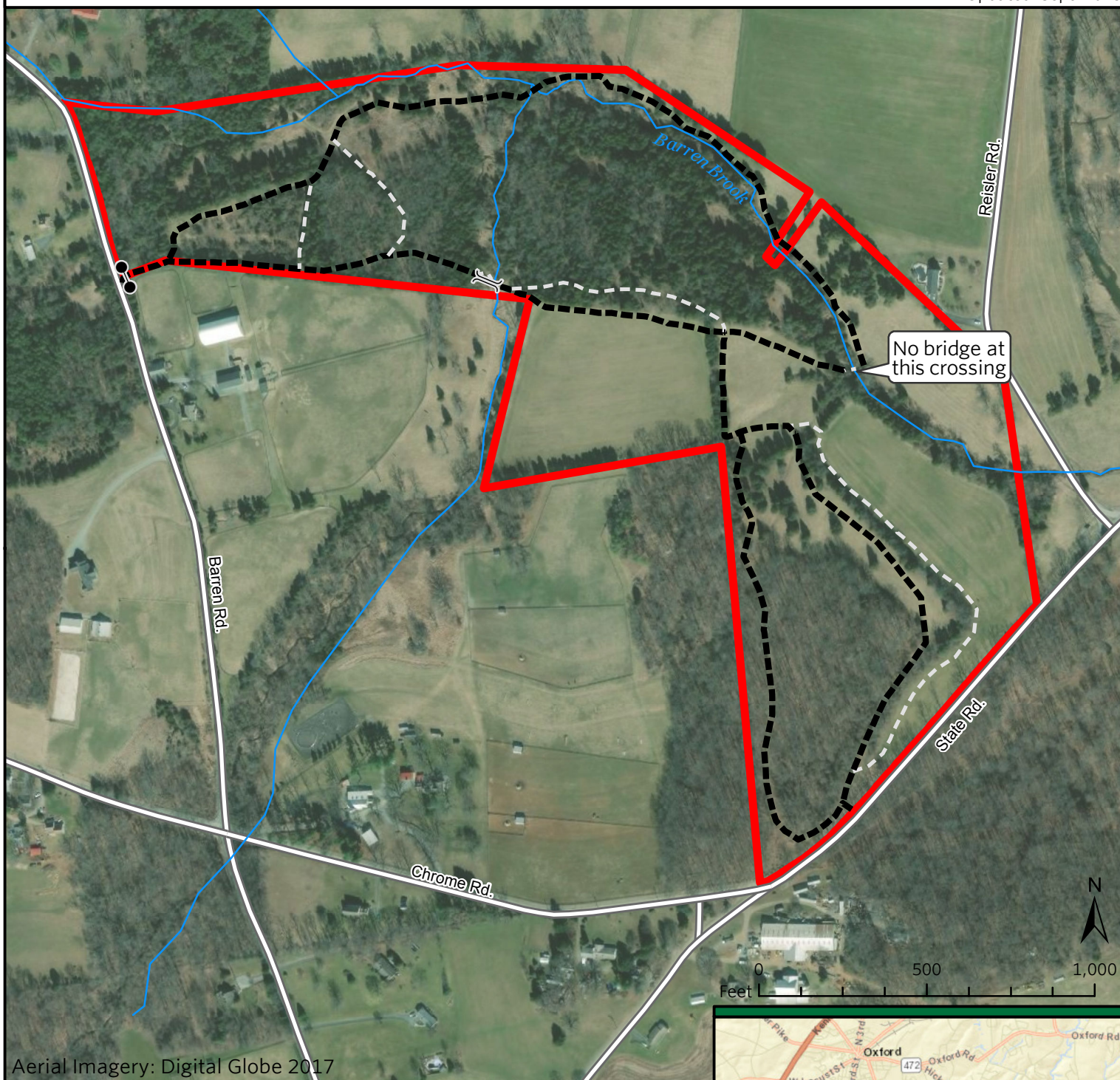





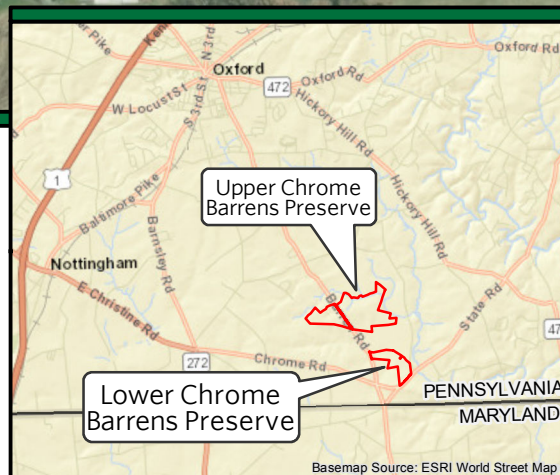
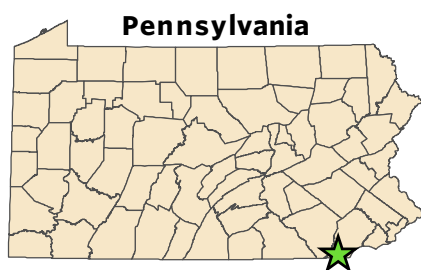


Lower Chrome Serpentine Barrens Preserve

Updated: Sept. 2018



-  Preserve Boundary
-  Main Trails (Unblazed)
-  Secondary Trails (Unblazed)
-  Bridge
-  Gate



*This map is not a survey and should not be construed as one.

Basemap Source: ESRI World Street Map

Lower Chrome Barrens (Chester County)

Location: Along the Maryland-Pennsylvania border, the Lower Chrome Serpentine Barrens is 31.4 acres in Chester County. It is open to public hunting in cooperation with the Pennsylvania Game Commission.

Directions: From Route 1 take the Oxford exit (Route 10). Turn south on Route 10 and drive 1.7 miles to the center of Oxford and turn left onto Market Street. Cross over railroad tracks and turn right on Fifth Street. Follow Fifth Street 2.7 miles to the intersection with Media Road (Media Mennonite Chapel is on the right corner). Cross over Media Road, and you are now on Barrens Road. Follow Barrens Road for another 1.5 miles. Lower Chrome will be on the left; there is no designated parking for this property.

This property is not enrolled in the Deer Management Assistance Program.

For more information and questions call 570-643-7922 or www.nature.org/pahunting