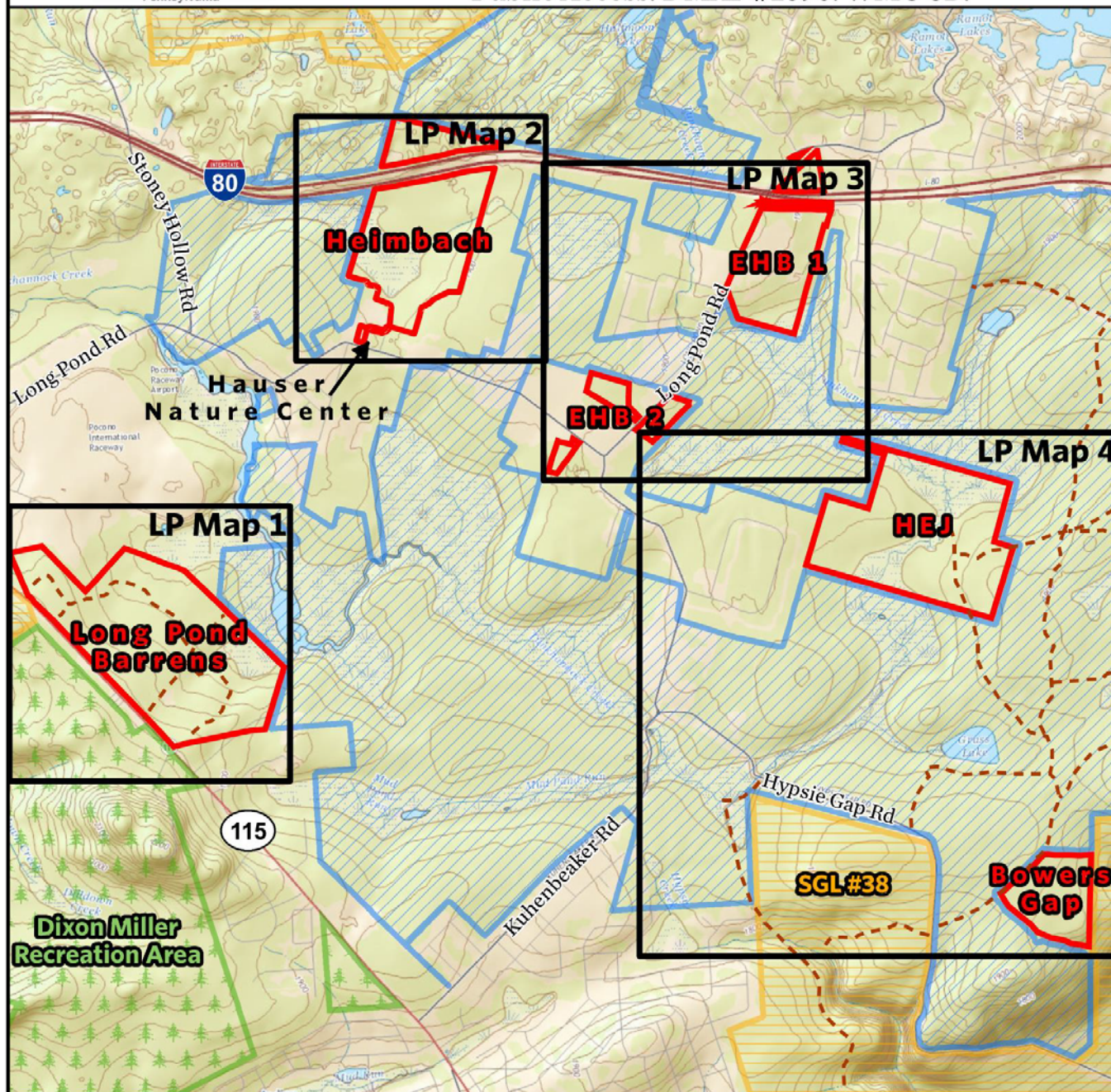


# Long Pond Nature Preserve

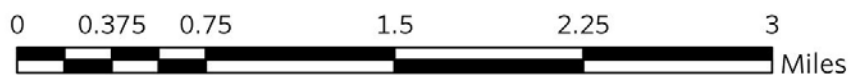
Public Access. DMAP #1596. WMU 3D.



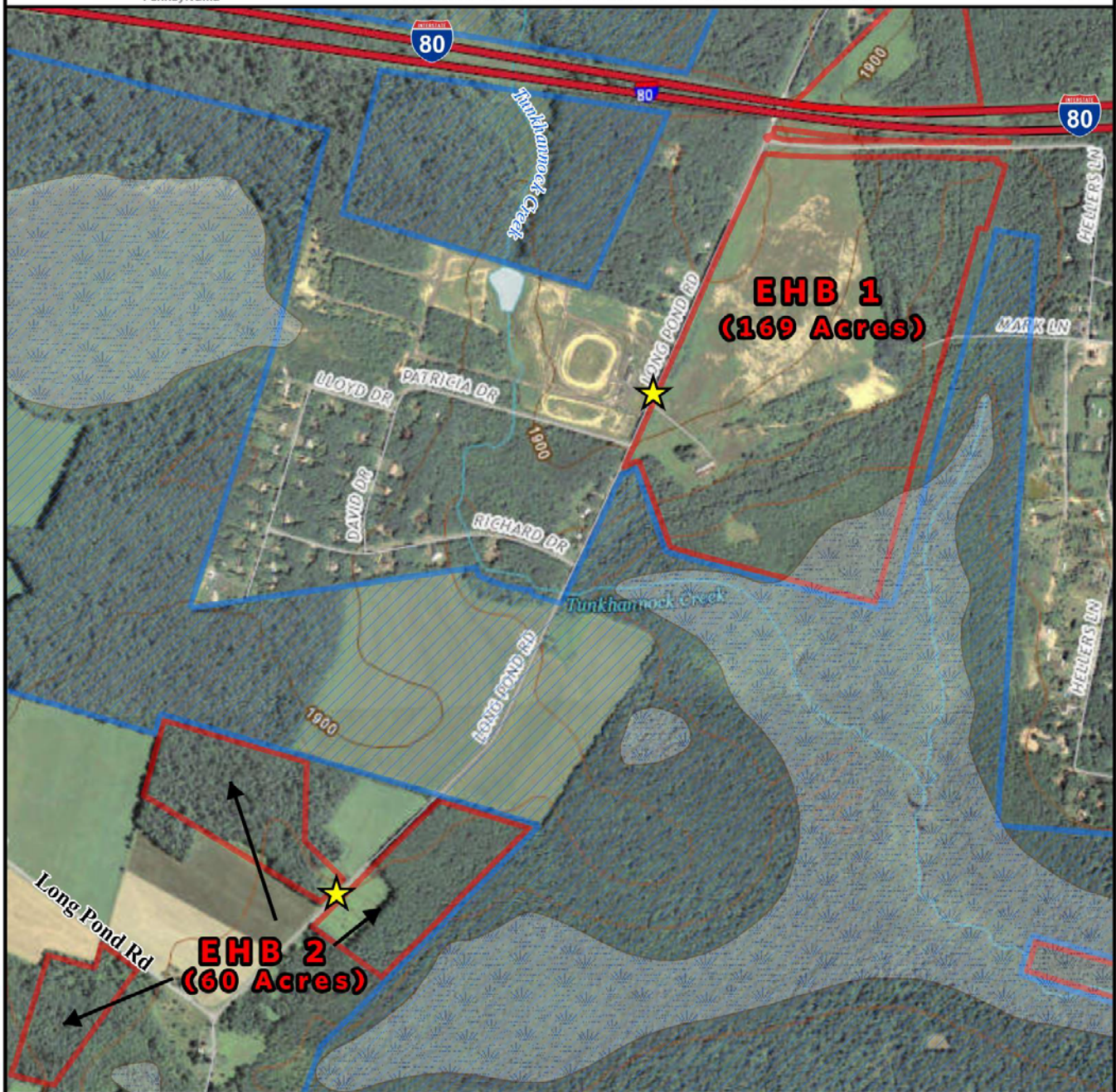
- The Nature Conservancy
- Bethlehem Authority
- PA State Forest
- PA State Game Lands
- Wetland
- Double Track Road



August 2015







- The Nature Conservancy
- Bethlehem Authority
- Wetland
- ★ Parking/Gate Location

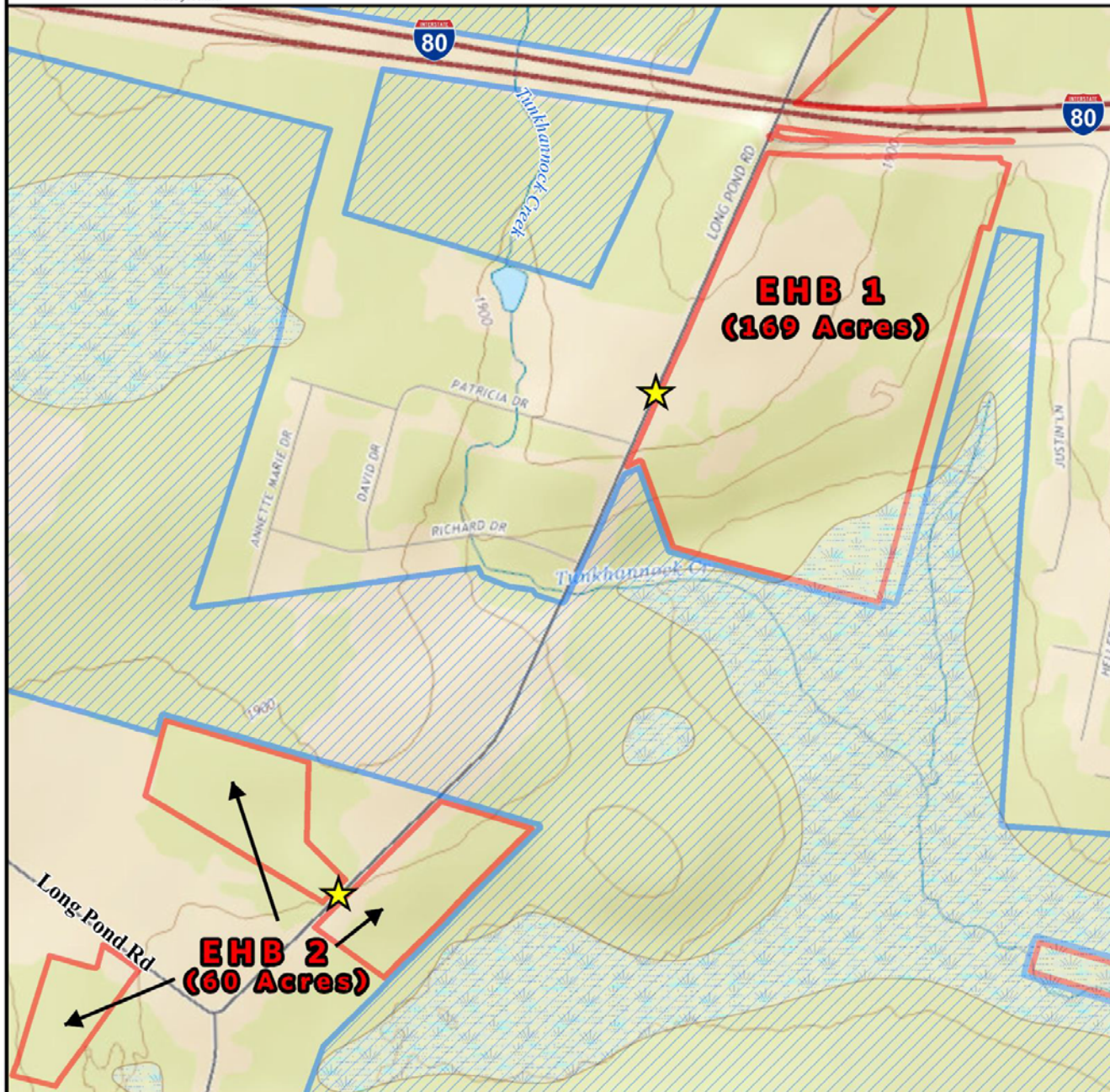


August 2015

0 500 1,000 2,000 3,000 4,000 Feet







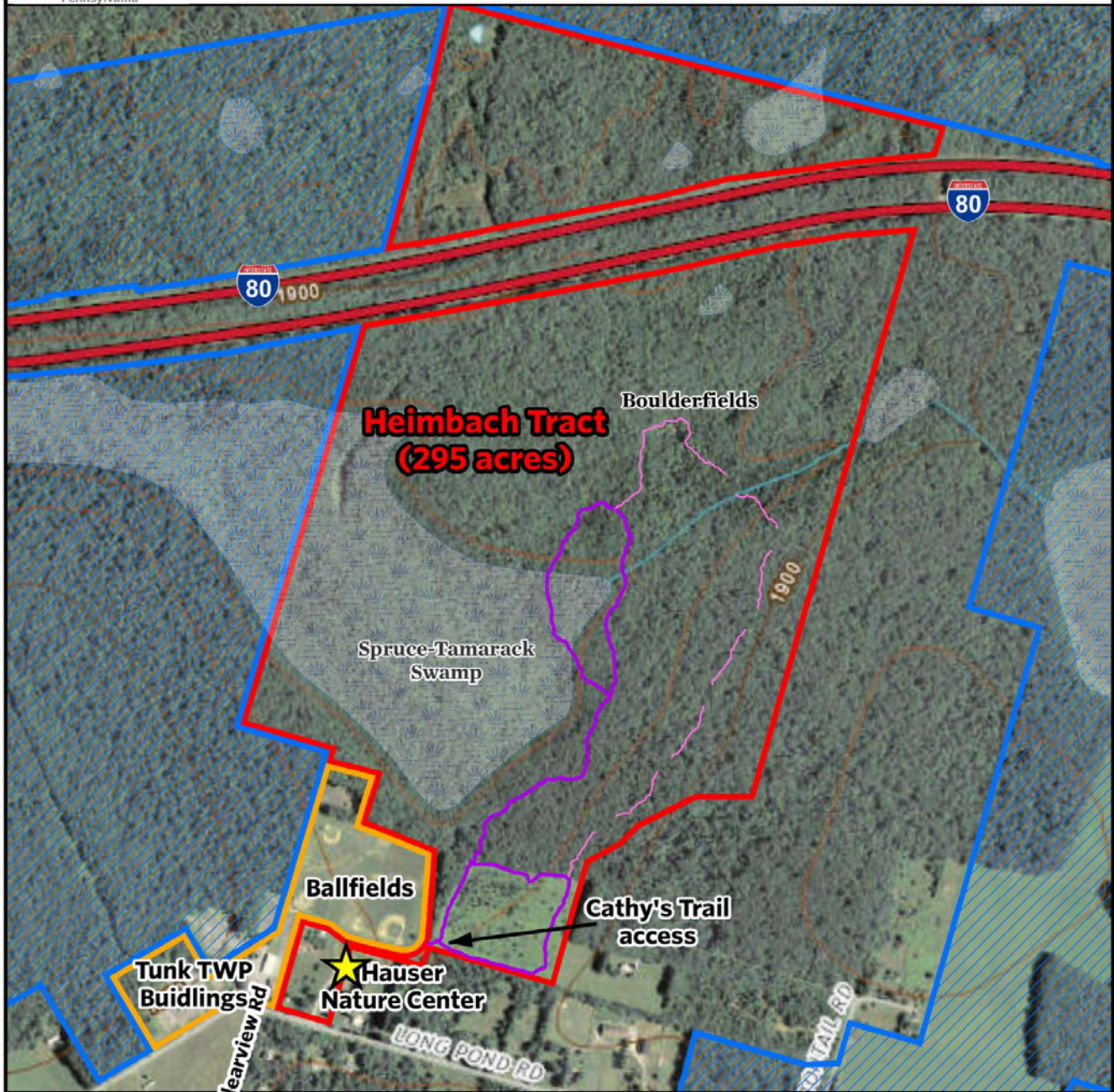
- The Nature Conservancy
- Bethlehem Authority
- Wetland
- ★ Parking/Gate Location



0 500 1,000 2,000 3,000 4,000 Feet







- The Nature Conservancy
- Tunkhannock Township
- Bethlehem Authority
- Wetland
- Trails
- Trail construction in progress
- ★ Parking Lot

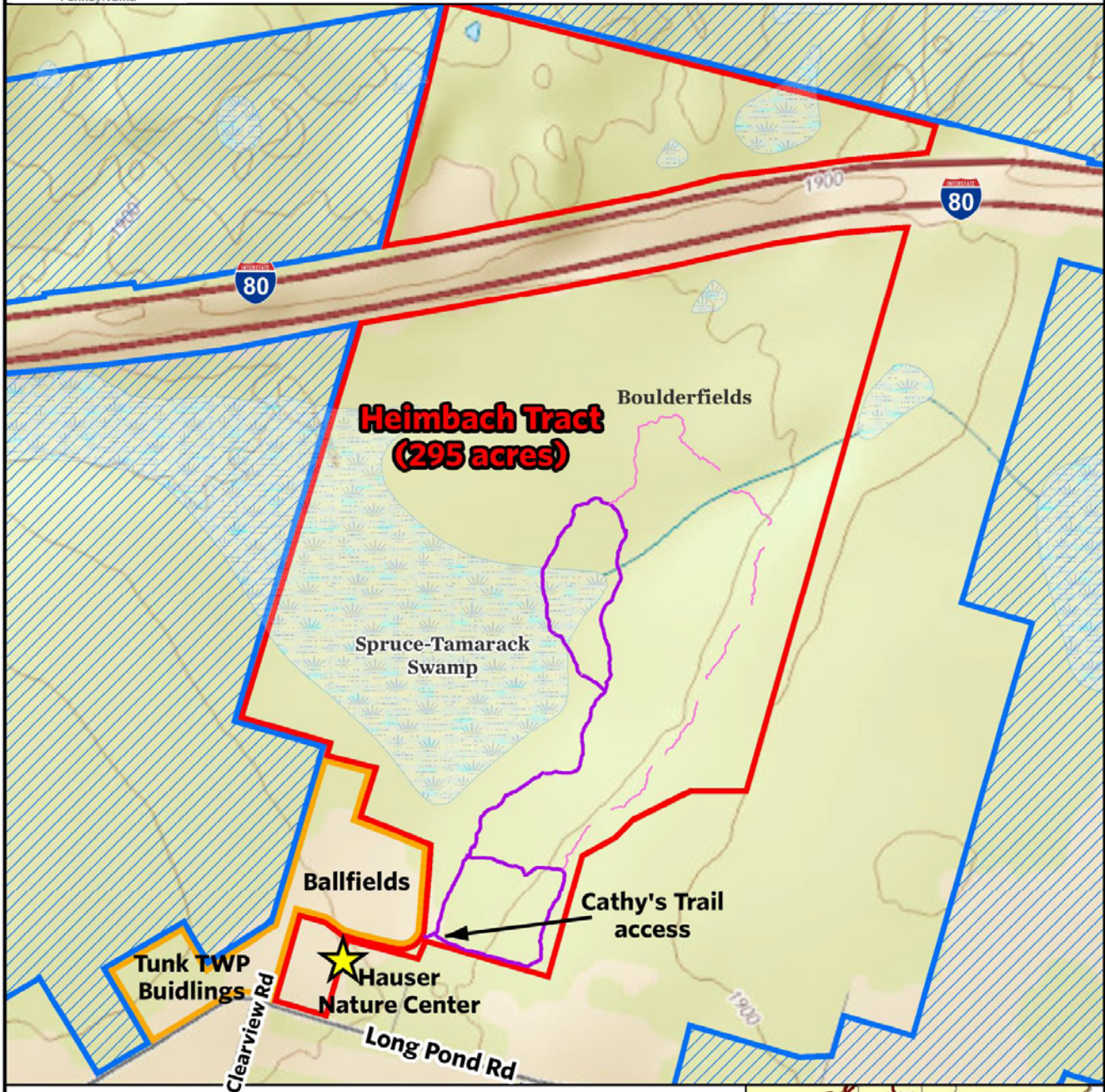


August 2015

0 375 750 1,500 2,250 3,000  
Feet







- |                        |                                |
|------------------------|--------------------------------|
| The Nature Conservancy | Trail construction in progress |
| Tunkhannock Township   | Trails                         |
| Bethlehem Authority    | Parking Lot                    |
| Wetland                |                                |

0 375 750 1,500 2,250 3,000  
Feet







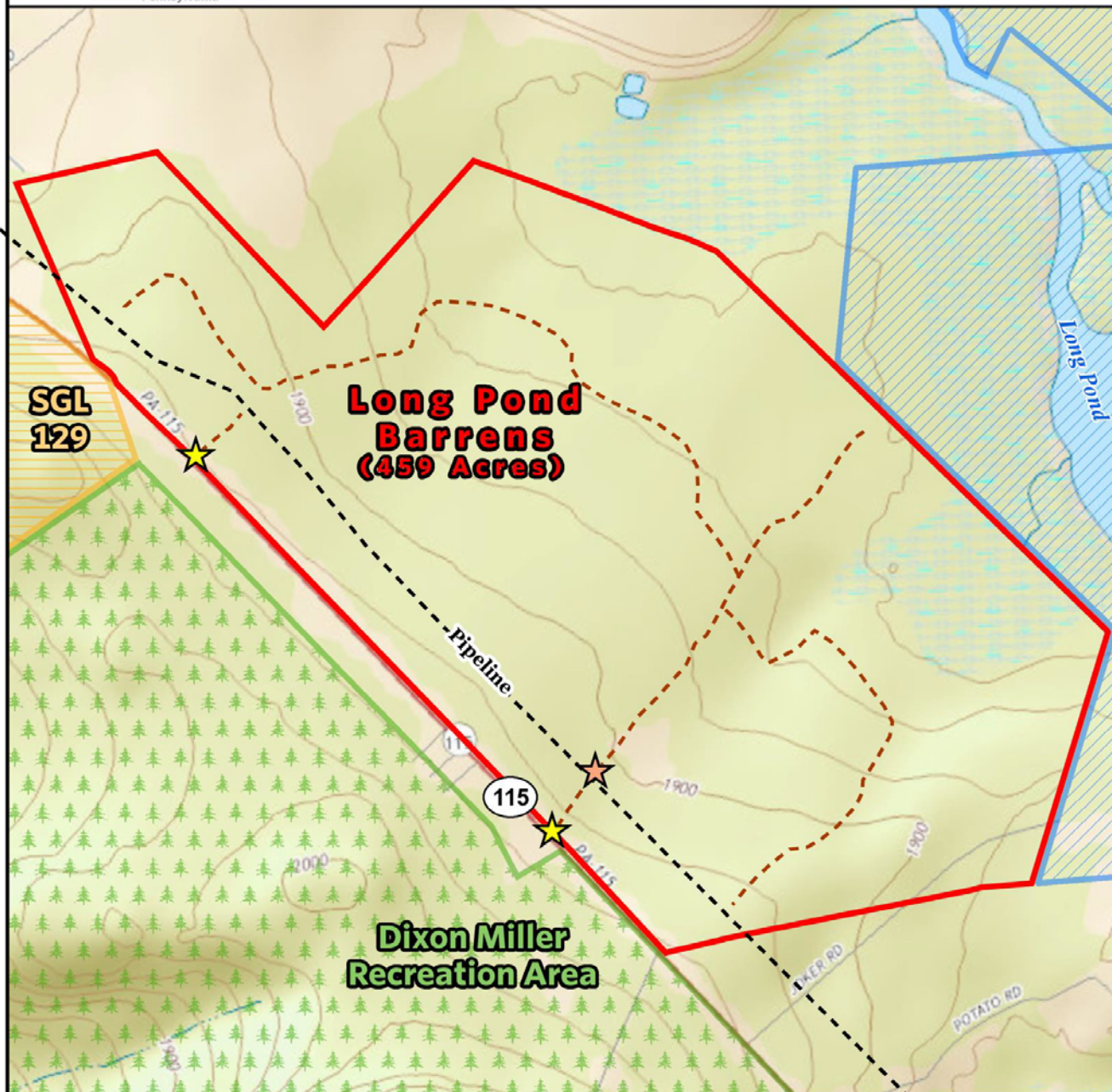
- The Nature Conservancy
- Bethlehem Authority
- PA State Forest
- PA State Game Lands
- Double Track Road

- ★ Parking/Gate Location
- ★ Parking when gate is open  
(Do not drive along pipeline corridor)

0 375 750 1,500 2,250 3,000  
Feet







- The Nature Conservancy
- Bethlehem Authority
- PA State Forest
- PA State Game Lands
- Double Track Road

- ★ Parking/Gate Location
- ★ Parking when gate is open  
(Do not drive along pipeline corridor)

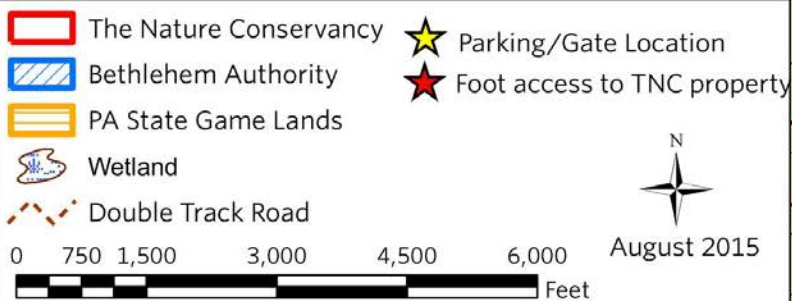
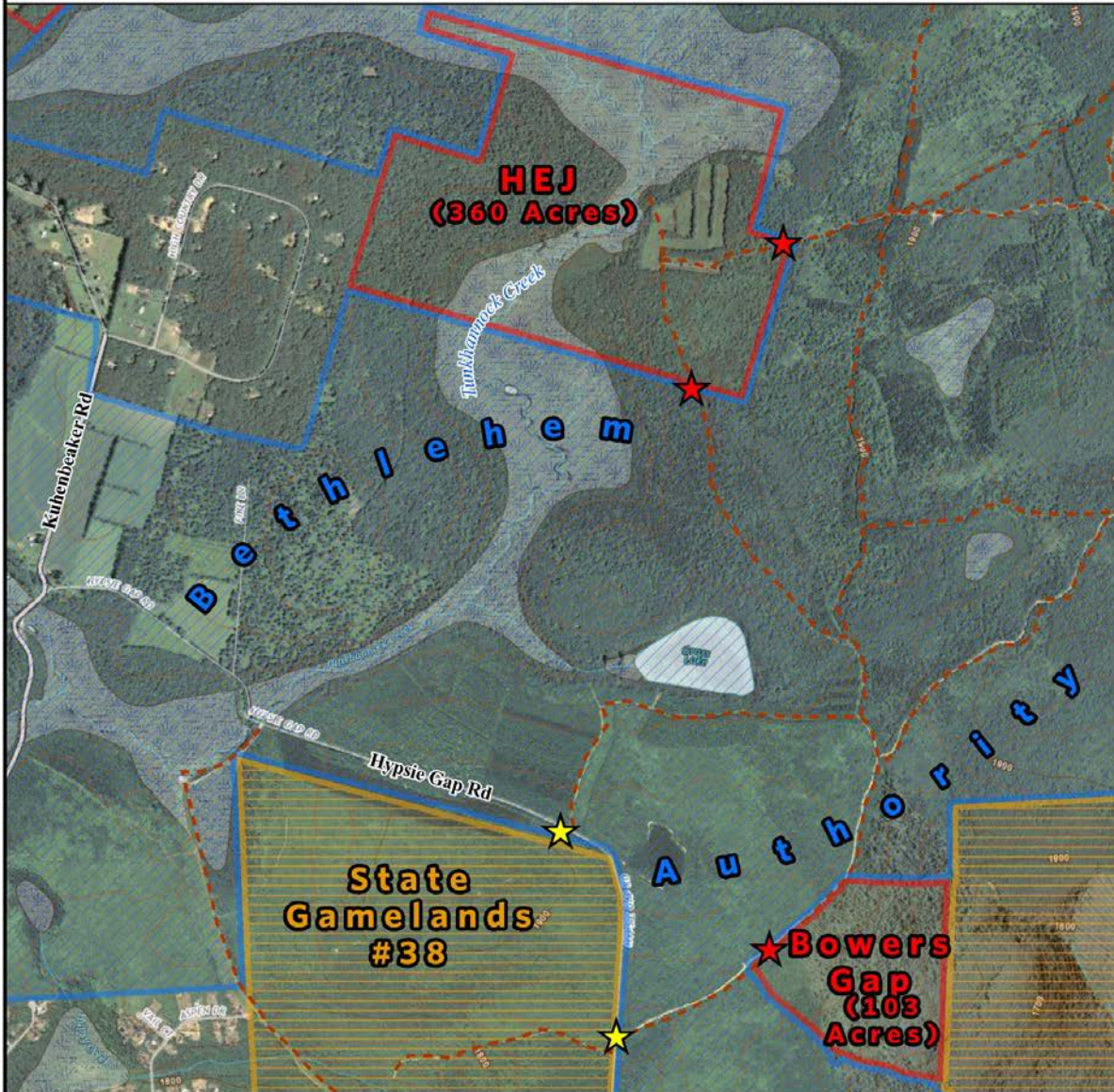
0 375 750 1,500 2,250 3,000  
Feet



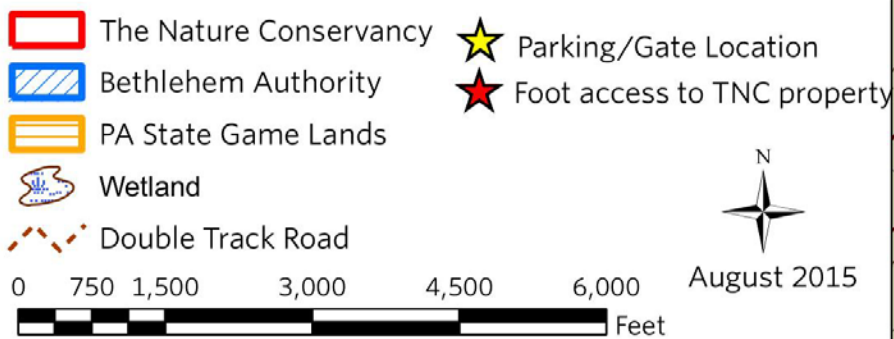
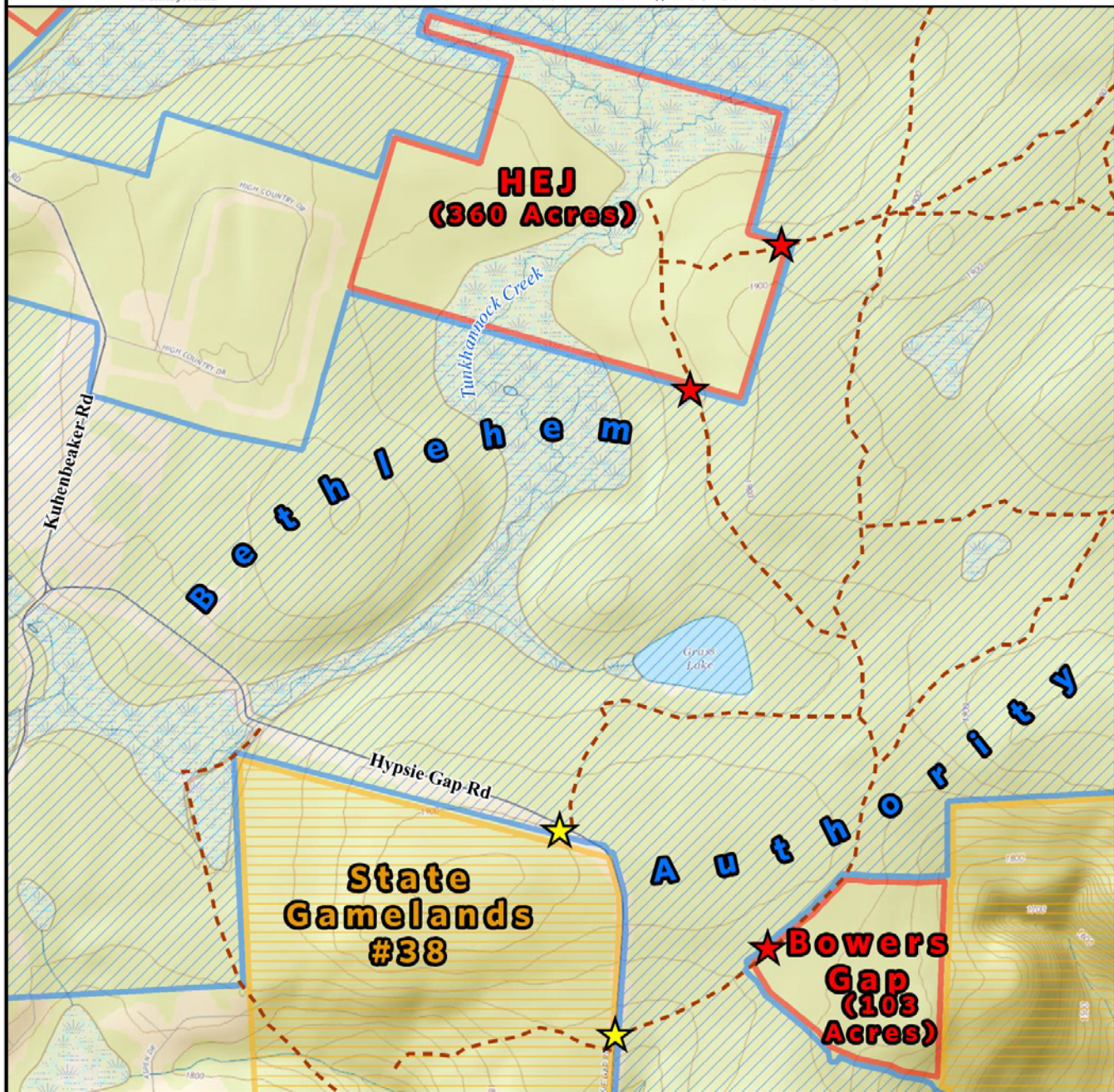
August 2015













## **Long Pond Nature Preserve (Monroe County)**

### **DMA #1596 - WMU 3D - Monroe County, Pennsylvania**

The Long Pond Preserve is comprised of several different properties within Tunkhannock Township including the Long Pond Barrens, Heimbach Tract, EHB 1, EHB 2, HEJ, and Bowers Gap. Many of these properties are accessed by parking on the road adjacent to the property. However, the HEJ and Bowers Gap Tracts must be accessed by parking on Hypsie Gap Rd and traversing the lands of Bethlehem Authority on foot. The DMA #1596 coupon is valid ONLY for properties owned and managed by The Nature Conservancy in Long Pond depicted on the accompanying maps.

The Long Pond Nature Preserve contains a wide variety of wildlife habitats. Bogs, swamps, barrens, boreal forest, northern hardwood forest, and plantations make up the natural communities found in the vicinity.

TNC properties in Long Pond are enrolled in PGC's public access cooperator program and are subject to all State Game lands rules and regulations.

#### **\*Important\***

- TNC properties are posted with white diamond-shaped markers
- Trapping is not permitted on any TNC property
- Motorized vehicles are not permitted on TNC property (except designated parking)
- Please observe all posted signage and respect the property of our neighbors

#### **Directions to Hauser Nature Center**

From I- 80, take Exit 284 (Blakeslee). Turn onto PA 115 South. Continue for 3.1 miles. Turn left onto Long Pond Road at the Pocono Raceway sign. Continue for 2.7 miles. Just past Tunkhannock Township firehouse and the Long Pond post office the turn is on the left for The Nature Conservancy. A sign faces the road.  
GPS Coordinates: 41.061695, -75.485231

Please contact The Nature Conservancy at (570) 643-7922 with any questions.

**Road Access:** There are two access points located on Route 115. The first or north access is located 0.8 miles south of the intersection of Route 115 and Long Pond Road. The second or south access is located 0.8 miles south of the north access, 1.6 miles south of the intersection of Route 115 and Long Pond Road. The south access is also located 0.2 miles north of the entrance to the Dixon Miller Recreation Area (Delaware State Forest - District #19). Please, do not block any gate.

#### **Location:**

Long Pond Preserve is 1,450 acres in Monroe County and open for public hunting through cooperation with the Pennsylvania Game Commission, DMA ID #1596, WMU 3D

#### **Directions from Hauser Nature Center to each tract:**

Bowers Gap (5.0 mi) - From the Hauser Nature Center driveway, turn left onto Long Pond Road. After 1.3 miles, bear right onto Kuhenbeaker Road (Long Pond Road continues left). Continue on Kuhenbeaker Road for 1.4 miles to turn left unto Hypsie Gap Road, which is unpaved and unmarked. This turn is just before the Tunkhannock Creek bridge. Continue 1.9 miles, over the Tunkhannock Creek bridge and past one gate on the left. Park at the second gate on the left. Walk 0.4 miles past the gate on



Bethlehem Authority property to access the Bowers Gap tract on the right.

**Long Pond Barrens**, 3.5-4.3 mi - From the Hauser Nature Center driveway, turn right onto Long Pond Road. After 2.7 miles, at the T intersection, turn left onto PA-115 south. Continue 0.8 miles to a gate on the left (Blue Ridge Realty/Monroe County) OR 1.6 miles to a gate on the left (Brenner et al/TNC).

**EHB 1** (2.4 mi) - From the Hauser Nature Center driveway, turn left onto Long Pond Road. After 1.3 miles, bear left to stay on Long Pond Road. Continue for 1.1 miles to a small driveway and cable gate on the right.

**EHB 2** (1.3 mi) - From the Hauser Nature Center driveway, turn left onto Long Pond Road. After 1.3 miles, the three discontinuous properties which comprise the EHB 2 tract are located around this intersection. All are accessed off of Long Pond Road and do not have designated parking.

**Heimbach** (0 mi) - Hauser Nature Center is located on the Heimbach Tract. To access Cathy's trail, which traverses the Heimbach tract, walk behind the Hauser Nature Center parking lot and retention basin. Turn right and walk parallel to the baseball field towards the row of trees separating the ball fields from the meadow beyond. A sign indicates the beginning of Cathy's trail, which crosses the meadow before entering the forest.

These properties are enrolled in the Deer Management Assistance Program. (DMAP) DMAP is operated by the Pennsylvania Game Commission. Their website is <https://www.pgc.pa.gov>

For more information and questions call 570-643-7922 or [www.nature.org/pahunting](http://www.nature.org/pahunting)