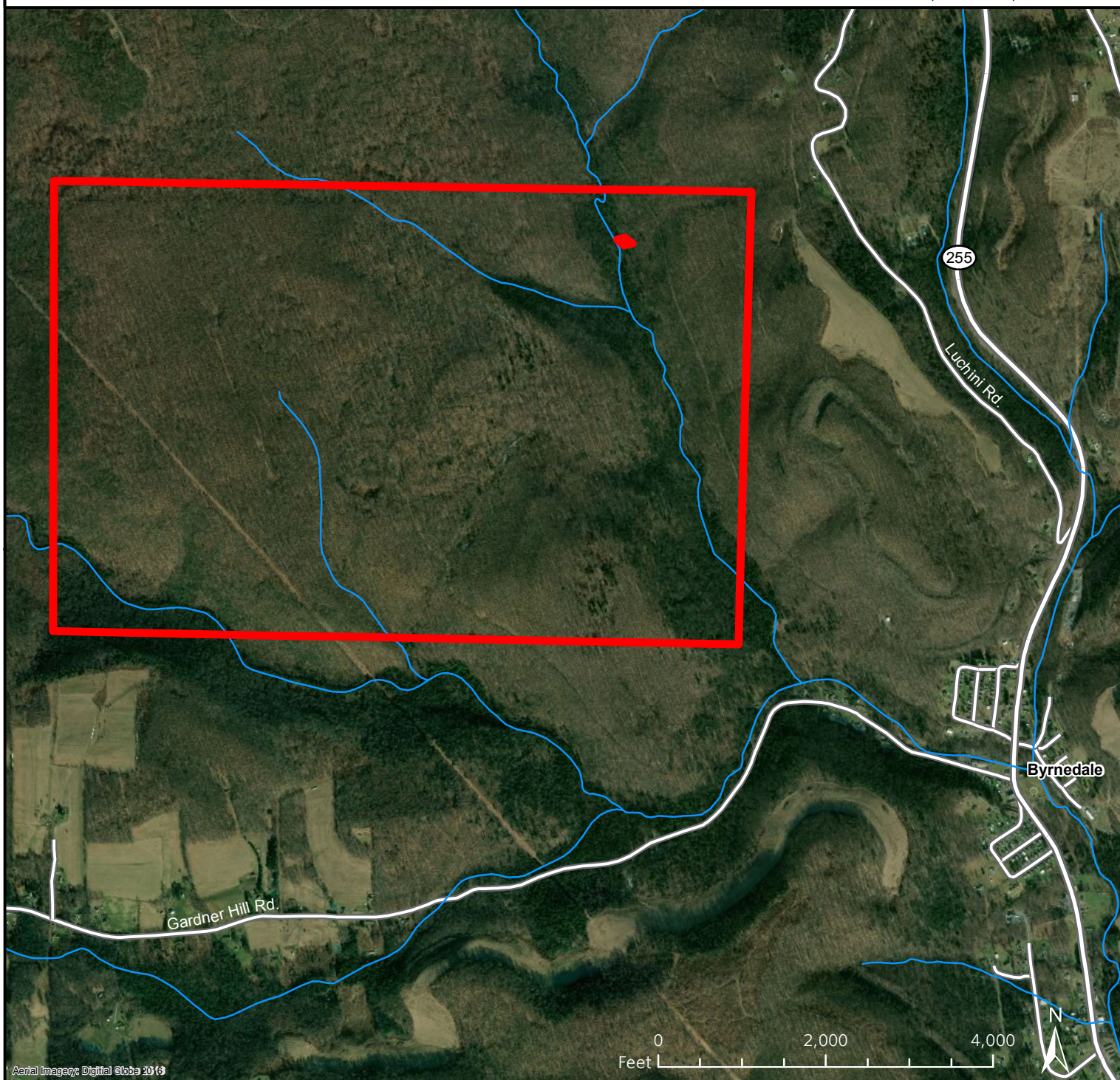


Elk Timberlands Kersey Run Tract

DMAP ID # 1747

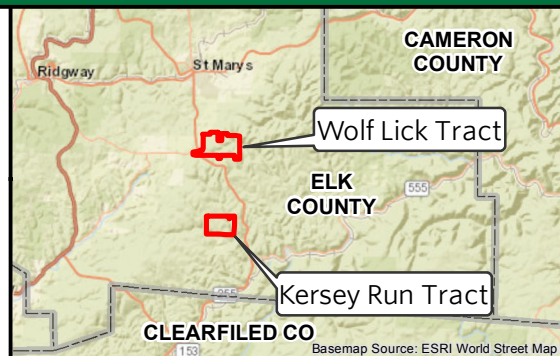
Updated: September 2018



Kersey Run Tract Boundary



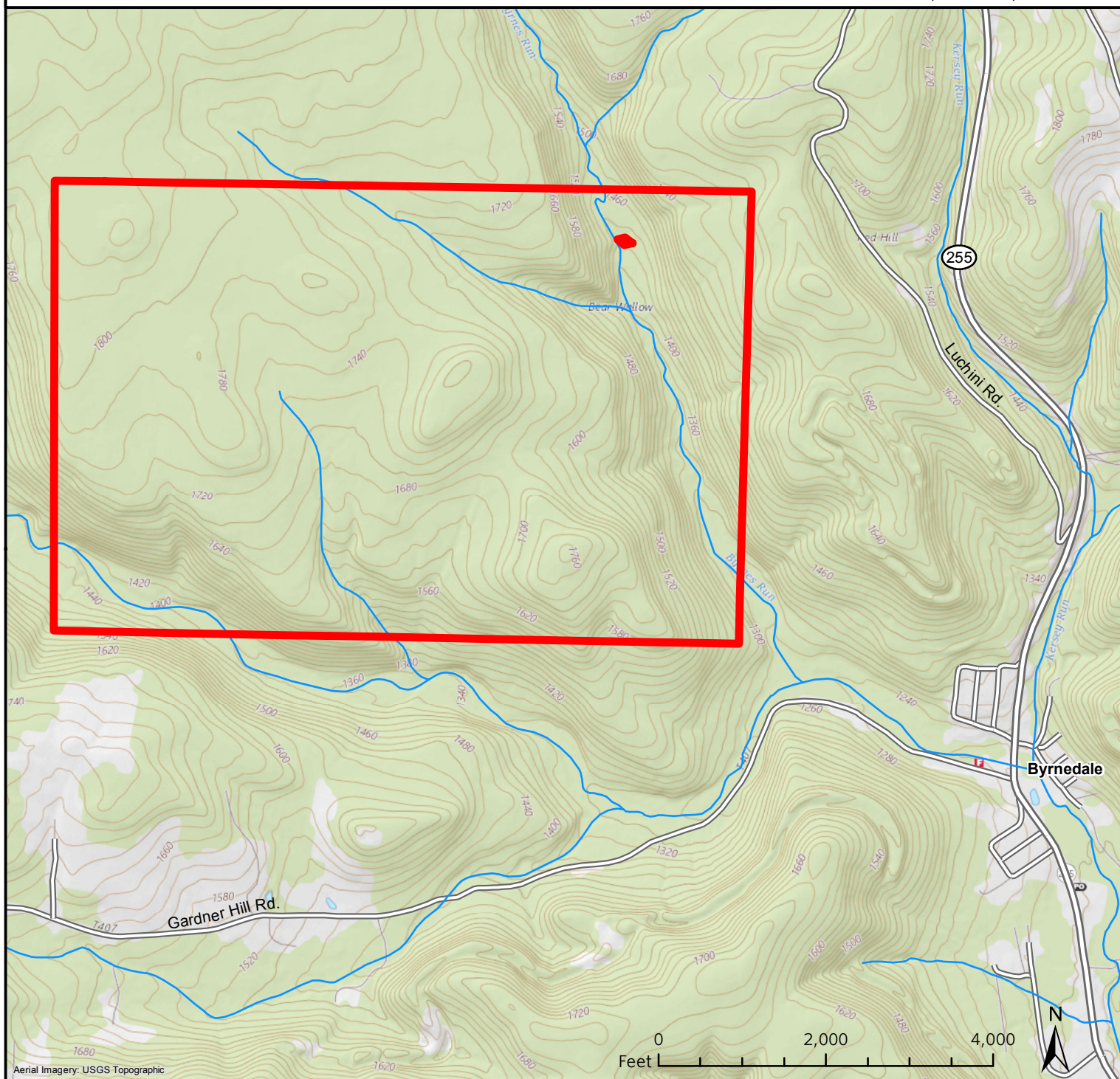
Pennsylvania



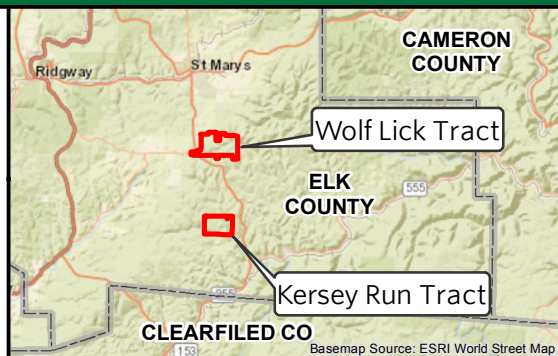
*This map is not a survey and should not be construed as one.

CLEARFILED CO

Basemap Source: ESRI World Street Map



Kersey Run Tract Boundary



*This map is not a survey and should not be construed as one.

CLEARFILED CO

Basemap Source: ESRI World Street Map

Kersey Run (Elk County)

Through a unique partnership between The Nature Conservancy and Elk Timberlands LLC., both Wolf Lick and Kersey Run tracts (formerly Kaul and Hall Oil & Gas Company Land) in Elk County are open for public hunting in cooperation with the Pennsylvania Game Commission.

Location: Kersey Run: DMAP ID #1747, - WMU 2G; Wolf Lick: DMAP ID #1748, - WMU 2G

Directions: Kersey Run and Wolf Lick tracts are located in Fox and Jay Townships (Elk County) a few miles south of St. Mary's off of State Route 255. Parking for Wolf Lick is along the east side of SR 255. There is no defined parking area yet for Kersey Run along the outskirts of Byrnedale.

This property is enrolled in the Deer Management Assistance Program. (DMAP) DMAP is operated by the Pennsylvania Game Commission. Their website is <https://www.pgc.pa.gov>

For more information and questions call 570-643-7922 www.nature.org/pahunting