

Location Type 1 - Small Green Stormwater Infrastructure (GSI) Features

Location Characteristics

Follows "Right Tree in the Right Place"

Low Points Collect Stormwater Runoff

Soil Decompacted to a Depth $\geq 18"$

May Have Tree Trenches, Curb Cuts, or Scuppers

Similar Restrictions to Location Type 5

Examples: Anthea Building, SSCAFCA, and South 2nd St.



Tree Characteristics

Mature Tree Height: Site Specific

Inundation Compatible up to 96 Hours.

Pollution Tolerant



Photo Credit: Land and Water Summit

Recommended Trees

<i>Celtis reticulata</i>	Netleaf Hackberry
<i>Cercis canadensis var. mexicana</i> *	Mexican Redbud*
<i>Cercis occidentalis</i> *	Western Redbud*
<i>Cercis reniformis</i> *	Oklahoma Redbud*
<i>Cercis canadensis var. texensis</i> *	Texas Redbud*
<i>Crataegus ambigua</i> *	Russian Hawthorne*
<i>Forestiera neomexicana</i>	New Mexico Privet
<i>Fraxinus cuspidata</i> *	Fragrant Ash*
<i>Lagerstroemia indica</i> *	Crape Myrtle*
<i>Pistacia chinensis</i>	Chinese Pistache
<i>Prosopis glandulosa</i> *	Honey Mesquite*
<i>Prosopis pubescens</i> *	Screwbean Mesquite*
<i>Salix gooddingii</i>	Gooding's Willow
<i>Sapindus saponaria var. drummondii</i> *	Western Soapberry*

* These species have further site specific needs found in Master List

Location Type 2 - Large Green Stormwater Infrastructure (GSI) Features

Location Characteristics

Follows "Right Tree in the Right Place"

Low Points Collect Stormwater Runoff

Soil Decompacted to a Depth $\geq 18"$

May Have Basins, Swales, or Infiltration Trenches

Examples: SCAFCA Landscaping, Pete Domenici Courthouse, and Smith Brasher Hall



Tree Characteristics

Mature Tree Height: Site Specific

Inundation Compatible ≥ 96 Hours

Pollution Tolerant



Photo Credit: MRWN Landscape Architects

Recommended Trees

<i>Celtis reticulata</i>	Netleaf Hackberry
<i>Cercis canadensis var. mexicana*</i>	Mexican Redbud*
<i>Cercis occidentalis*</i>	Western Redbud*
<i>Cercis reniformis*</i>	Oklahoma Redbud*
<i>Cercis canadensis var. texensis*</i>	Texas Redbud*
<i>Crataegus ambigua*</i>	Russian Hawthorne*
<i>Forestiera neomexicana</i>	New Mexico Privet
<i>Fraxinus cuspidata</i>	Fragrant Ash
<i>Gymnocladus dioica*</i>	Kentucky Coffeetree*
<i>Platanus mexicana</i>	Mexican Sycamore
<i>Lagerstroemia indica*</i>	Crape Myrtle*
<i>Maclura pomifera*</i>	Osage Orange*
<i>Pistacia chinensis</i>	Chinese Pistache
<i>Populus deltoides</i>	Eastern Cottonwood
<i>Populus deltoides var. wislizeni</i>	Rio Grande Cottonwood
<i>Prosopis glandulosa*</i>	Honey Mesquite*
<i>Prosopis pubescens</i>	Screwbean Mesquite
<i>Quercus arizonica</i>	Arizona White Oak
<i>Quercus ilex*</i>	Holly Oak*
<i>Quercus muehlenbergii</i>	Chinkapin Oak
<i>Quercus suber*</i>	Cork Oak*
<i>Quercus virginiana*</i>	Southern Live Oak*
<i>Salix gooddingii</i>	Gooding's Willow
<i>Sapindus saponaria var. drummondii*</i>	Western Soapberry*
<i>Ulmus x "Morton" Accolade™</i>	Accolade Elm
<i>Ulmus x 'Frontier'</i>	Frontier Elm
<i>Ulmus parvifolia*</i>	Lacebark Elm*
<i>Taxodium mucronatum*</i>	Montezuma Cypress*
<i>Zelkova serrata</i>	Japanese Zelkova

* These species have further site specific needs found in Master List

Location Type 3 - Xeriscaped Public Recreation, Residential, or Commercial Places

Location Characteristics

Follows "Right Tree in the Right Place"

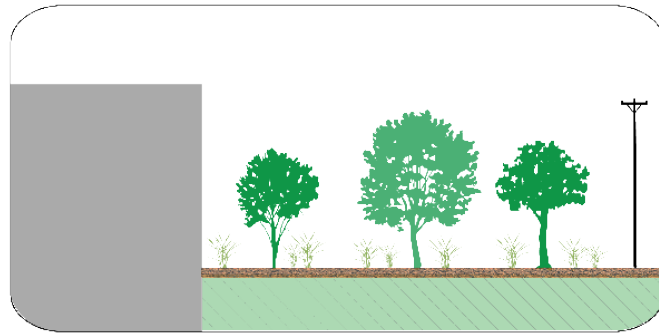
Consider Existing Utilities

Building Setback: Varies

Consider Users

Xeriscaped or Low-Medium Irrigation

Examples: Plants of the Southwest, Explora, High Desert Neighborhood



Tree Characteristics

Mature Tree Height: Site Specific

Water Needs: Low to Very Low

Ornamental and Large Trees

Wildlife or Pollinator Benefit Desired



Photo Credit: ABCWUA

Recommended Trees

<i>Arbutus xalapensis</i>	Texas Madrone
<i>Celtis reticulata</i>	Netleaf Hackberry
<i>Cercis canadensis var. mexicana</i>	Mexican Redbud
<i>Cercis reniformis</i>	Oklahoma Redbud
<i>Cercis canadensis var. texensis</i>	Texas Redbud
<i>Cercis occidentalis</i>	Western Redbud
<i>Cedrus atlantica</i>	Atlas Cedar
<i>Chilopsis linearis</i>	Desert Willow
<i>Cotinus obovatus</i>	American Smoketree
<i>Forestiera neomexicana</i>	New Mexico Privet
<i>Gymnocladus dioica</i>	Kentucky Coffeetree
<i>Fraxinus cuspidata*</i>	Fragrant Ash*
<i>Juniperus deppeana*</i>	Alligator Juniper*
<i>Juniperus monosperma*</i>	One Seed Juniper*
<i>Juniperus virginiana*</i>	Eastern Red Cedar*
<i>Lagerstroemia indica</i>	Crape Myrtle
<i>Leucaena retusa*</i>	Golden Ball Lead Tree*
<i>Maclura pomifera</i>	Osage Orange
<i>Parkinsonia x Cercidium*</i>	Palo Verde Hybrids*
<i>Pinus eldarica</i>	Italian Stone Pine
<i>Pinus pinea*</i>	Afghan Pine*
<i>Pistacia chinensis*</i>	Chinese Pistache*
<i>Prosopis glandulosa*</i>	Honey Mesquite*
<i>Prosopis velutina*</i>	Velvet Mesquite*
<i>Quercus arizonica</i>	Arizona White Oak
<i>Quercus fusiformis</i>	Escarpment Live Oak
<i>Quercus gravesii</i>	Chisos Red Oak
<i>Quercus ilex</i>	Holly Oak
<i>Quercus muehlenbergii</i>	Chinquapin Oak
<i>Quercus oblongifolia</i>	Blue Oak
<i>Quercus suber*</i>	Cork Oak*
<i>Sapindus saponaria var. drummondii*</i>	Western Soapberry*
<i>Sophora secundiflora*</i>	Texas Mountain Laurel*
<i>Rhus lanceolata</i>	Prairie Flameleaf Sumac
<i>Ulmus x "Morton" Accolade™</i>	Accolade Elm
<i>Ulmus x 'Frontier'</i>	Frontier Elm
<i>Ulmus parvifolia*</i>	Lacebark Elm*
<i>Vitex agnus castus</i>	Chaste Tree

* These species have further site specific needs found in Master List

Location Type 4 - Public Recreation, Residential, or Commercial Places

Location Characteristics

Follows "Right Tree in the Right Place"

Consider Existing Utilities

Consider Users

Building Setback: >10'

Examples: UNM Golf Course, Mountain View Community Center, Ridgecrest Neighborhood, and Tigues Park



Tree Characteristics

Mature Tree Height: Site Specific

Water Needs: High Irrigation Tolerant

Ornamental and Large Trees

Wildlife or Pollinator Benefit Desired



Photo Credit: ABCWUA

Recommended Trees

<i>Celtis reticulata</i>	Netleaf Hackberry
<i>Cercis canadensis var. mexicana</i>	Mexican Redbud
<i>Cercis reniformis</i>	Oklahoma Redbud
<i>Cercis canadensis var. texensis</i>	Texas Redbud
<i>Cercis occidentalis</i>	Western Redbud
<i>Cedrus atlantica</i>	Atlas Cedar
<i>Cedrus deodara</i>	Deodar Cedar
<i>Forestiera neomexicana*</i>	New Mexico Privet*
<i>Gymnocladus dioica</i>	Kentucky Coffeetree
<i>Fraxinus cuspidata*</i>	Fragrant Ash*
<i>Juniperus deppeana*</i>	Alligator Juniper*
<i>Juniperus virginiana*</i>	Eastern Red Cedar*
<i>Lagerstroemia indica</i>	Crape Myrtle
<i>Maclura pomifera*</i>	Osage Orange*
<i>Pinus eldarica</i>	Italian Stone Pine
<i>Pinus pinea</i>	Afghan Pine
<i>Pistacia chinensis</i>	Chinese Pistache
<i>Platanus mexicana</i>	Mexican Sycamore
<i>Populus deltoides</i>	Eastern Cottonwood
<i>Populus deltoides var. wislizeni</i>	Rio Grande Cottonwood
<i>Prosopis pubescens*</i>	Screwbean Mesquite*
<i>Prunus mexicana</i>	Mexican Plum
<i>Quercus arizonica</i>	Arizona White Oak
<i>Quercus fusiformis</i>	Escarpment Live Oak
<i>Quercus gravesii</i>	Chisos Red Oak
<i>Quercus ilex</i>	Holly Oak
<i>Quercus muehlenbergii</i>	Chinkapin Oak
<i>Quercus suber*</i>	Cork Oak*
<i>Quercus buckleyi</i>	Texas Red Oak
<i>Quercus virginiana</i>	Southern Live Oak
<i>Sapindus saponaria var. drummondii*</i>	Western Soapberry*
<i>Sophora secundiflora</i>	Texas Mountain Laurel
<i>Rhus lanceolata</i>	Prairie Flameleaf Sumac
<i>Taxodium mucronatum*</i>	Montezuma Cypress*
<i>Ulmus x "Morton" Accolade™</i>	Accolade Elm
<i>Ulmus x 'Frontier'</i>	Frontier Elm
<i>Ulmus parvifolia</i>	Lacebark Elm
<i>Vitex agnus castus</i>	Chaste Tree
<i>Zelkova serrata</i>	Japanese Zelkova

* These species have further site specific needs found in Master List

Location Type 5 - Streetscapes with Average Growing Area

Location Characteristics

Follows "Right Tree in the Right Place"

Soil Volume: Sufficient

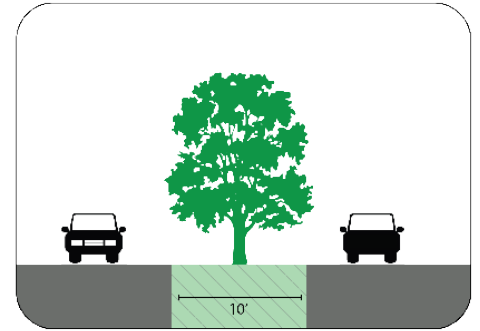
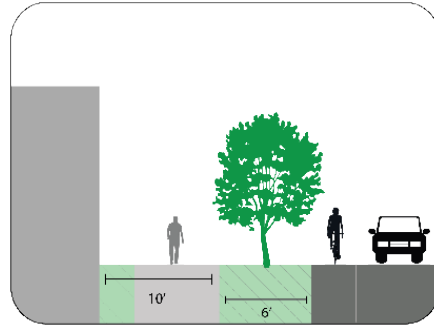
No Utility Conflicts

Building Setback: >10'

Consider Sidewalks, On-Street Parking, Bike Paths

Median or Parkway Width: ≥ 6'

Examples: Menaul Blvd, Big I Medians, 12th and 4th St., Ridgecrest Neighborhood



Tree Characteristics

Mature Tree Height: Any

Low Litter Potential

Compacted Soil and Pollution Tolerant

Will Require Structural Pruning



Photo Credit: ABCWUA

Recommended Trees

Arbutus xalapensis
Celtis reticulata
Cercis canadensis var. mexicana
Cercis reniformis
Cercis canadensis var. texensis
Cercis occidentalis
Cedrus deodara
Chilopsis linearis
Cotinus obovatus
Crataegus ambigua
Forestiera neomexicana
Gymnocladus dioica
*Fraxinus cuspidata**
Lagerstroemia indica
*Leucaena retusa**
Maclura pomifera
*Parkinsonia x Cercidium**
*Pistacia chinensis**
*Prosopis glandulosa**
Quercus arizonica
Quercus fusiformis
Quercus gravesii
Quercus ilex
Quercus muehlenbergii
Quercus oblongifolia
*Quercus suber**
Quercus buckleyi
*Sapindus saponaria var. drummondii**
*Sophora secundiflora**
Rhus lanceolata
Ulmus x "Morton" Accolade™
Ulmus x 'Frontier'
*Ulmus parvifolia**
Vitex agnus castus
Zelkova serrata

Texas Madrone
 Netleaf Hackberry
 Mexican Redbud
 Oklahoma Redbud
 Texas Redbud
 Western Redbud
 Deodar Cedar
 Desert Willow
 American Smoketree
 Russian Hawthorne
 New Mexico Privet
 Kentucky Coffeetree
 Fragrant Ash*
 Cape Myrtle
 Golden Ball Lead Tree*
 Osage Orange
 Palo Verde hybrids*
 Chinese Pistache*
 Honey Mesquite*
 Arizona White Oak
 Escarpment Live Oak
 Chisos Red Oak
 Holly Oak
 Chinkapin Oak
 Blue Oak
 Cork Oak*
 Texas Red Oak
 Western Soapberry*
 Texas Mountain Laurel*
 Prairie Flameleaf Sumac
 Accolade Elm
 Frontier Elm
 Lacebark Elm*
 Chaste Tree
 Japanese Zelkova

*These species have further site specific needs found in Master List

Location Type 6 - Restricted Growing Area

Location Characteristics

Follows "Right Tree in the Right Place"

Soil Volume: Limited

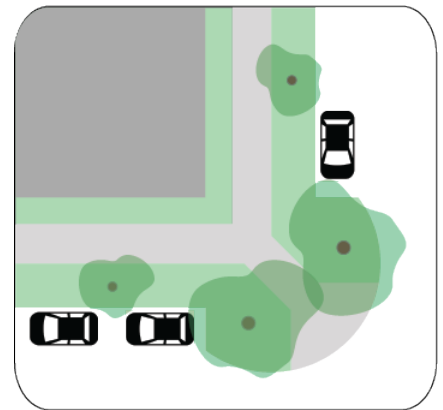
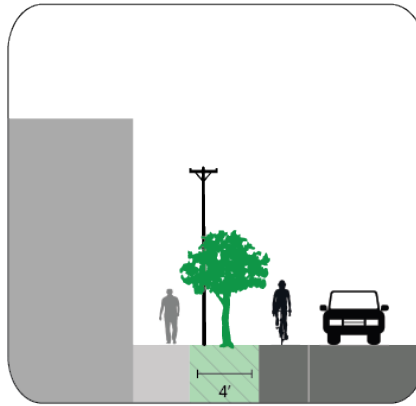
Consider Existing Utilities

Building Setback: <10'

Sidewalks, on-street parking, bike paths

Median or Parkway Width: 4-6'

Examples: Downtown Central Avenue and Silver Street



Tree Characteristics

Mature Tree Height: <25'

Low Root Damage Potential

Low Litter Potential

Compacted Soil and Pollution Tolerant

Will Require Structural Pruning

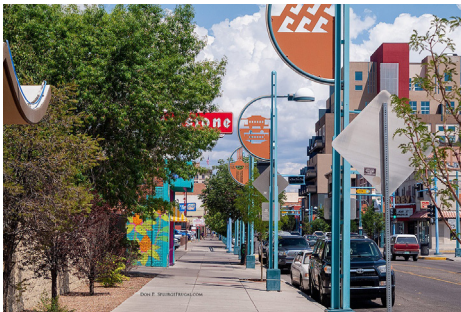


Photo Credit: Don P. SplurgeFrugal.com

Suggested Trees

Celtis reticulata
Cercis canadensis var. mexicana
Cercis occidentalis
Cercis reniformis
Cercis canadensis var. texensis
Fraxinus cuspidata
Lagerstroemia indica
Prosopis glandulosa
Quercus oblongifolia

Netleaf Hackberry
 Mexican Redbud
 Western Redbud
 Oklahoma Redbud
 Texas Redbud
 Fragrant Ash
 Crape Myrtle
 Honey Mesquite
 Blue Oak

* These species have further site specific needs found in Master List

Recommendations

In order to follow the "right tree in the right place," the practice of planting trees in medians or parkways should be limited to Location Type 5 for sufficient soil volume.

Medians or parkways 4-6' wide can only provide sufficient soil volume to support trees if there are continuous strips of soil or suspended pavement.

If the width is $\leq 4'$, plants that are $< 3'$ wide at maturity should be planted.

Climate Ready Fruit Trees

Location Characteristics

Follows "Right Tree in the Right Place"

Soil Volume: Sufficient

No Utility Conflicts

Recommended Trees

Diospyros texana
Ficus carica 'Mission'
Morus microphylaa
Pistacia vera
Punica granatum
Zizyphus jujuba
Cydonia oblonga
Diospyros kaki
Juglans microcarpa
Carya illinoinesis
Prunus armeniaca
Eriobotrya japonica

Texas Persimmon
Black Mission Fig
Little Leaf Mulberry
Pistachio
Pomegranate
Jujube
Quince
Japanese Persimmon
Little Walnut
Pecan
Apricot
Loquat

Tree Characteristics

Mature Tree Height: Any

High Litter Potential

Fruit Producing

Requires Irrigation to Ensure Fruit Production

*These species have further site specific needs found in Master List