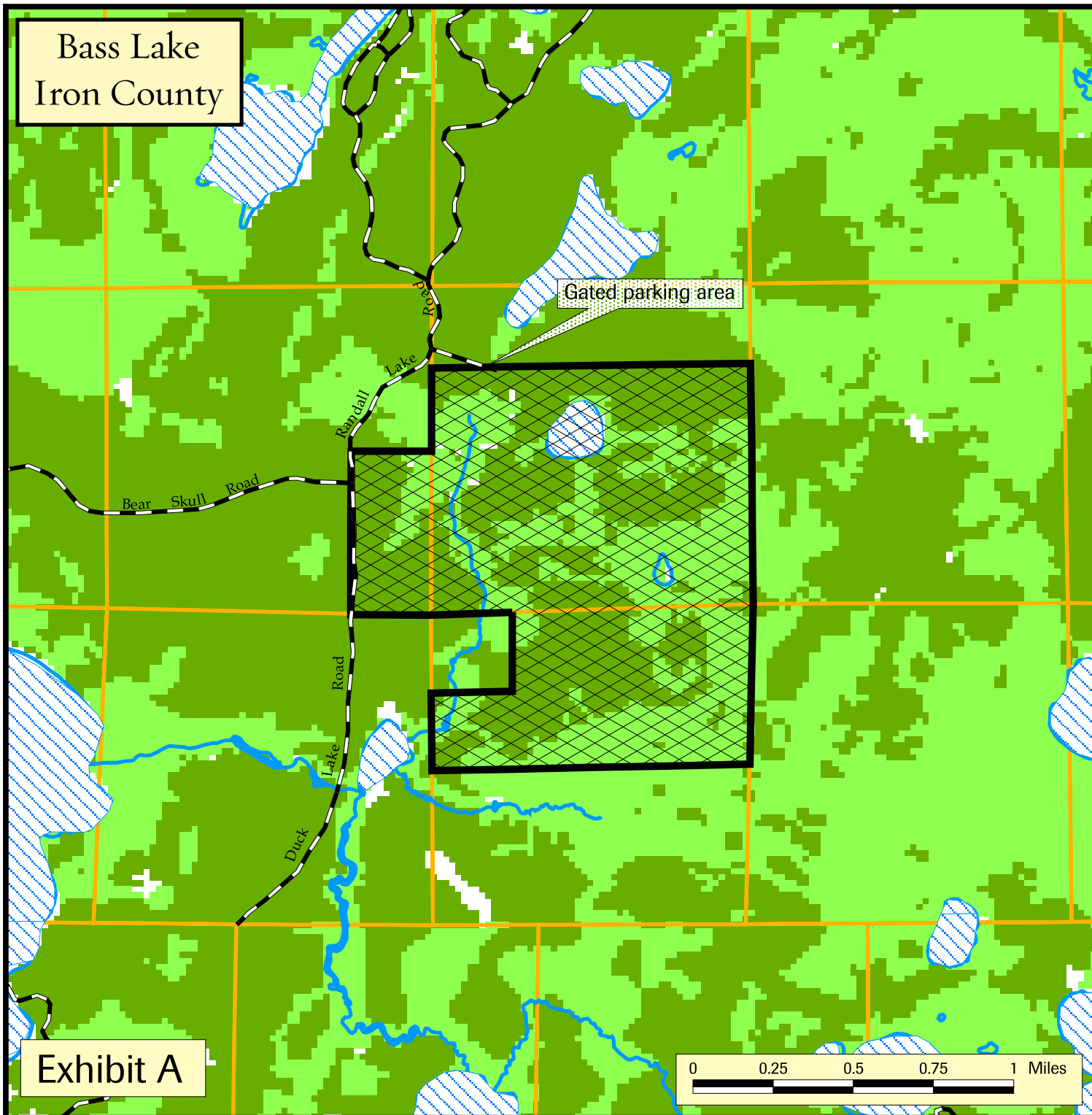
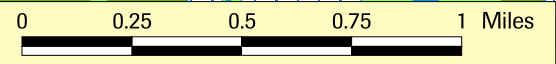









Bass Lake
Iron County

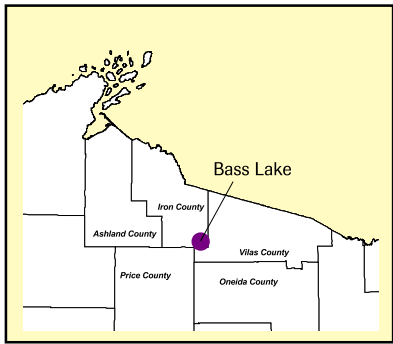


Gated parking area

Exhibit A



-  Property of The Nature Conservancy (TNC)
-  Wetland/forested wetland
-  Forested Land
-  Open Water
-  Streams
-  Roads
-  Section Lines



Bass Lake is located in Sherman Township, T41N - R4E, sections 29, 30, and 32; 840 acres.

April 18, 2006