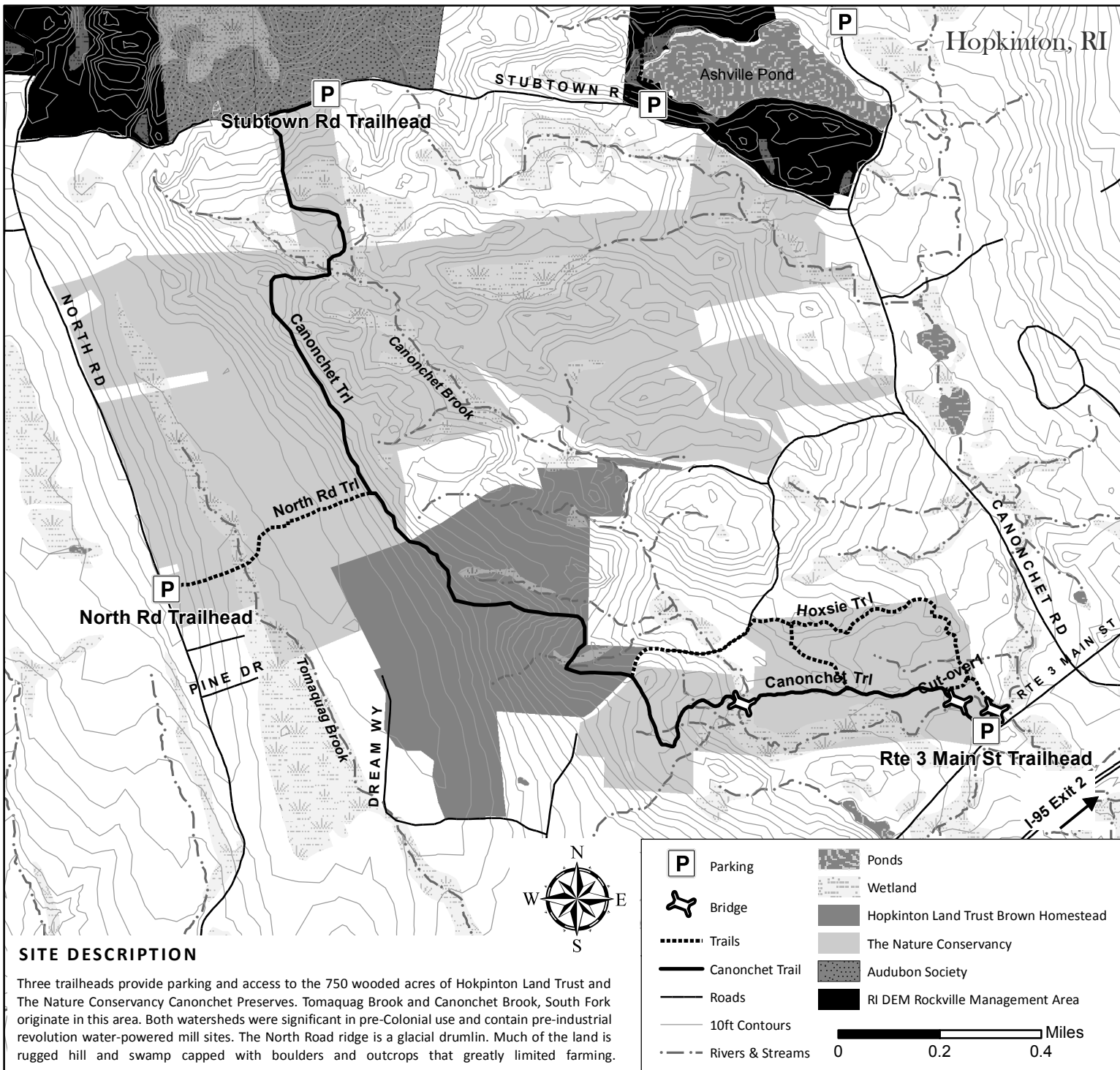


Canonchet Preserves, Three Trailheads Trail Map



SITE DESCRIPTION

Three trailheads provide parking and access to the 750 wooded acres of Hopkinton Land Trust and The Nature Conservancy Canonchet Preserves. Tomaquag Brook and Canonchet Brook, South Fork originate in this area. Both watersheds were significant in pre-Colonial use and contain pre-industrial revolution water-powered mill sites. The North Road ridge is a glacial drumlin. Much of the land is rugged hill and swamp capped with boulders and outcrops that greatly limited farming.

TRAILS

Canonchet Trail: 2.8 Miles from Rt. 3 trailhead to Stubtown Rd trailhead. Yellow Blaze, Difficulty Rating: 2C (See "Safety Guidelines" below).

Hoxsie Trail: 1.0 Mile, Blue Blaze, Difficulty Rating: 2C

Cut-Over 1, 0.1 Miles, White Blaze, Difficulty Rating: 2B

Cut-over2, 0.2 Miles, White Blaze, Difficulty Rating: 2B

North Rd Trail: 0.5 Miles, White Blaze, Difficulty Rating: 2C

TRAIL USE GUIDELINES

Observe posted rules and regulations
 Motorized vehicles prohibited
 No fires /No camping
 Wear "Blaze Orange" during hunting season
 Hunting only in State Management Areas as per DEM regulations
 Leave no trace, please carry out trash

SAFETY GUIDELINES

SAFETY IS YOUR RESPONSIBILITY - STAY WITHIN YOUR LIMITS

The information provided here on trail lengths, trail blaze colors, incline numbers and tread rating can assist you in making safe hiking decisions.

TRAIL DIFFICULTY RATINGS

Incline Number:

- 1 - Very little hill climbing
- 2 - Some moderate hill climbing
- 3 - Some significant hill climbing
- 4 - A good deal of significant hill climbing
- 5 - Nearly continuous steep hill climbing

Tread Rating:

- A - Trail is most entirely on pavement; probably suitable for baby strollers.
- B - A significant part of the trail is well-groomed with very little difficult terrain.
- C - A significant part of the trail has somewhat difficult terrain (rocky or rooted paths).
- D - A significant part of the trail has very difficult terrain.
- E - The majority of the trail has very difficult terrain.

Map by the Southern RI Conservation District using RIGIS data.

Map made possible by the Hopkinton Conservation Commission. Find this trail and more at www.hopkintonri.org and www.exploreri.org