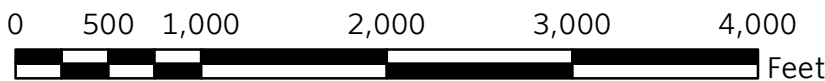
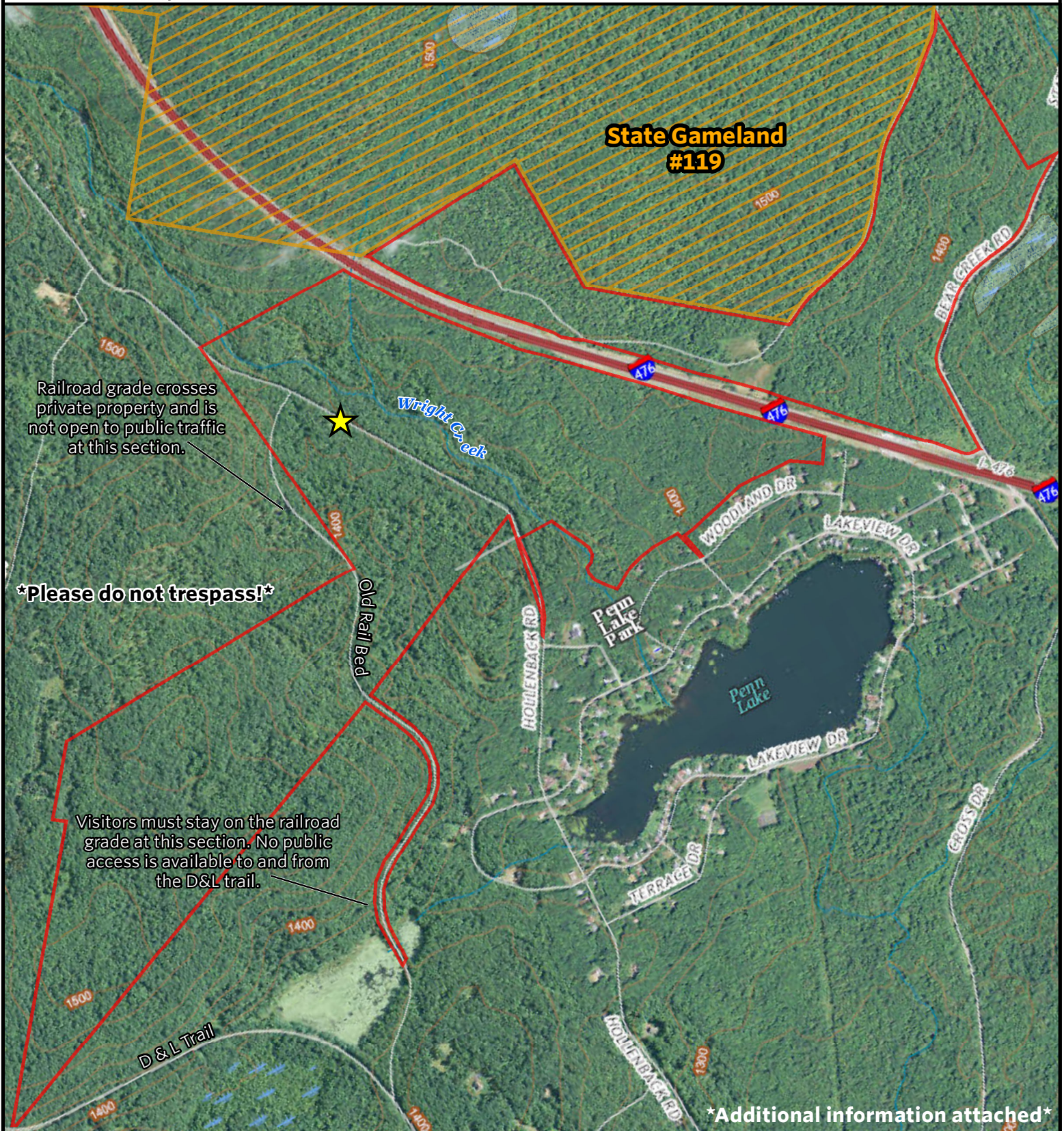


-  PA Game Commission
-  The Nature Conservancy
-  Wetland
-  Parking/Kiosk Location



August 2016





-  PA Game Commission
-  The Nature Conservancy
-  Wetland
-  Parking/Kiosk Location



August 2016



The Nature Conservancy's Goeringer Preserve DMAP #2443 - WMU 3D - Luzerne County, Pennsylvania

The Goeringer Preserve is owned and managed by The Nature Conservancy and is comprised of 390 acres of forest in Penn Lake Park, PA. The DMAP #2443 coupon is valid ONLY at the Goeringer Preserve. The preserve is enrolled in PGC's public access cooperator program and is subject to all State Gamelands rules and regulations.

The preserve is primarily dry oak - heath forest and dry oak-heath woodland. Most of the preserve is dominated by a variety of fire tolerant oak species and an understory of heaths, including huckleberry, lowbush blueberry, sheep laurel, and teaberry. Wright Creek passes through the preserve before its impoundment at Penn Lake.

An old railroad grade winds through the western side of the property. This rail bed leaves the preserve for a short section. Please respect our neighbor's private property and do not trespass on this section of the rail bed. No access is available to and from the D&L trail.

Important

- TNC properties are posted with white diamond-shaped markers
- Trapping is not permitted on any TNC property
- Motorized vehicles are not permitted on TNC property (except designated parking)
- Please observe all posted signage and respect the property of our neighbors

Directions

From I-80 Eastbound: get off I-80 at Exit 273 (White Haven--940). Turn left at the end of the ramp onto Church Street. Continue on Church Street for .3 miles and turn right onto Berwick Street (following signs for 940). Go .2 miles and take the third left onto Towanda Street. (If you go over the bridge, you've missed the turn.) Stay on Towanda Street for almost four miles. (Note that Towanda Street changes names a couple of times ... it becomes Chestnut Street/ Middleburg Road/Cross Drive.) Turn left onto Hollenback Road when you see the large quarry on your right. Stay on Hollenback Road through the Penn Lake community. Once the paved road ends, continue on Hollenback for .5 miles. See small pull-off area on your left for parking. Old railroad bed trail begins just down the road from the parking pull-off.

From I-80 Westbound: get off I-80 at Exit 273 (White Haven -940). Turn right at end of ramp onto Church Street. Continue from directions above.

GPS Coordinates: 41.122637, -75.777078

Please contact The Nature Conservancy at (570) 643-7922 with any questions.